

 ALL SCIENTIFIC EQUIPMENT COMES WITH A TWO YEAR WARRANTY ON COMPONENTS AND DEFECTIVE WORKMANSHIP - Ts & Cs APPLY.

# Scientific Laboratory Equipment

## PRODUCT GUIDE



### DISCLAIMER

The products may differ slightly from the pictures shown in this catalogue. Output and capacities given are the maximum possible, and these figures do vary according to circumstances. Product information is subject to change.

## ABOUT US

Scientific Laboratory Equipment is South Africa's largest manufacturer of a premium range of laboratory equipment. We have been producing products for use in such markets as biochemistry, research, pharmaceuticals and general industry since 1966.

The 10, 000m<sup>2</sup> factory is situated west of Johannesburg, in South Africa. The most modern sheet metal processing machinery is used to consistently achieve the highest standards demanded in today's market.

The latest design software and a highly experienced team of designers and engineers ensure that our products remain a reliable, functional and cost effective solution to many laboratory applications.

Our products are now actively marketed in over 40 countries worldwide through a well established distributor network.



## Ts & Cs

### WARRANTY

- All Scientific equipment comes with a standard ONE year warranty, The 1 Year Extended Warranty is only valid for customers who have registered their warranty online at [www.scientific.co.za](http://www.scientific.co.za) within the first year after making their purchase.

### DISCLAIMER

- Output performance figures quoted are dependent on various factors. Scientific reserves the right, without notice, to make changes and revisions to product specifications, materials and design, when we believe it will provide better performance, durability, and efficiency. Unit measurements may vary depending on point of reference.

### NOTE

- When viewing the appliance from the front in it's usual operating position, the width (W) of the product is the total distance from left to right; the depth (D) of the product is the total distance from the front to the back; the height (H) is the total distance from the bottom of the product to the top. Pictures may vary from actual product.

**ALL SCIENTIFIC EQUIPMENT COMES WITH A TWO YEAR WARRANTY ON COMPONENTS AND DEFECTIVE WORKMANSHIP - Ts & Cs APPLY.**

PROUDLY  
MANUFACTURED  
IN SOUTH AFRICA



# CATALOGUE INDEX

COUNTERTOP OVENS & INCUBATORS	1-4
DOUBLE DOOR OVENS & INCUBATORS	5-8
VERTICAL OVENS AND INCUBATORS	9-10
INDUSTRIAL OVENS	11-13
INDUSTRIAL INCUBATOR	14
STANDARD MUFFLE FURNACES	15
HIGH TEMPERATURE FURNACES	16
VOLATILE & ASHING FURNACES	17
COOLED INCUBATORS	18
GROWTH CHAMBERS	19
SHAKING INCUBATORS	20-21
LABORATORY CIRCULATOR	22
COOLING BATHS	22
LABORATORY WATER BATHS	23
HEATABLE BATHS	24
METABOLIC WATER BATH	25
ORBITAL SHAKERS	26
SIEVE SHAKER	27
LINEAR SHAKER	27
GLASSWARE DRIER	28
MAGNETIC STIRRER	28
LABORATORY TROLLEYS	29
DESICCATOR CABINET	30
HOTPLATES	31
STEAM BATHS	32
BLENDER	32
MIXER	33
WATER STILLS	33
RIFFLE SPLITTERS	34
THERMOCENTER	42
GLASSWARE CLEANER	43-44
VACUCENTER	45
HEATING CENTER	46



## INDEX

OVERHEAD STIRRER	36
CERAMIC MAGNETIC STIRRER	36
HEATED MAGNETIC STIRRER	37
ULTRASONIC BATHS	38
DIGITAL CIRCULATOR	39
LABORATORY HOTPLATES	40

# COUNTERTOP OVENS & INCUBATORS

## STANDARD OVEN FEATURES

Whether for use in simple drying processes, ageing, curing or general investigations, Scientific ovens provide the ideal solution for diverse thermal applications

- Choice of 5 different capacities
  - S/S 430 body construction with S/S 304 interior
  - Powder coated mild steel door and control panel
  - Robust slam lock door handle
  - Fitted with adjustable hydraulic safety thermostat
- NOTE**
  - Temperature variation figures are based on no load conditions at 100°C
  - Supplied with x2 shelves



## ECONOMY OVENS

### FEATURES

- A general purpose oven with a hydraulic thermostat control ideal for applications where accuracy is not critical
- Operating temperature +50°C to 250°C based on an ambient of 25°C

### SPECIFICATIONS

MODEL	220	221	222
TEMP. VARIATION ACROSS CHAMBER (±°C)	1.5	1.5	2.0
POWER	1000W	1000W	1500W
VOLTAGE	230V / 50Hz	230V / 50Hz	230V / 50Hz
PACKAGING (W x D x H)	765 x 665 x 570 (mm)	885 x 770 x 590 (mm)	930 x 850 x 910 (mm)
UNIT (W x D x H)	655 x 590 x 510 (mm)	755 x 700 x 535 (mm)	810 x 765 x 735 (mm)
NET WEIGHT	34kg	40kg	63kg
GROSS WEIGHT	38kg	45kg	75kg
SHIPPING VOLUME	0.29m <sup>3</sup>	0.40m <sup>3</sup>	0.77m <sup>3</sup>
CHAMBER DIMENSIONS	385 x 360 x 370 (mm)	485 x 455 x 400 (mm)	530 x 530 x 580 (mm)
CHAMBER VOLUME	40ℓ	80ℓ	160ℓ
SHELF CAPACITY	5	5	8
MAXIMUM SHELF LOAD	26kg (per shelf)	26kg (per shelf)	26kg (per shelf)

### SPECIFICATIONS

MODEL	223	224
TEMP. VARIATION ACROSS CHAMBER (±°C)	2.5	2.5
POWER	2000W	3000W
VOLTAGE	230V / 50Hz	230V / 50Hz
PACKAGING (W x D x H)	1040 x 880 x 1030 (mm)	1130 x 1060 x 1110 (mm)
UNIT (W x D x H)	910 x 805 x 840 (mm)	1010 x 980 x 935 (mm)
NET WEIGHT	75kg	116kg
GROSS WEIGHT	88kg	132kg
SHIPPING VOLUME	0.94m <sup>3</sup>	1.33m <sup>3</sup>
CHAMBER DIMENSIONS	620 x 570 x 680 (mm)	725 x 755 x 775 (mm)
CHAMBER VOLUME	240ℓ	400ℓ
SHELF CAPACITY	8	10
MAXIMUM SHELF LOAD	20kg (per shelf)	20kg (per shelf)

## DIGITAL OVENS

### FEATURES

- Electronic P.I.D temperature control with digital indication of set and process value
- High accuracy PT 100 temperature sensor
- Solid state control relay for optimum reliability and rapid response
- Operating temperature +50°C to 250°C based on an ambient of 25°C
- Digital display of set and actual temperature to 0.1°C
- Temperature variation at a point ±0.3°C

### SPECIFICATIONS

MODEL	275	276	277
TEMP. VARIATION ACROSS CHAMBER (±°C)	1.5	1.5	2.0
POWER	1000W	1000W	1500W
VOLTAGE	230V / 50Hz	230V / 50Hz	230V / 50Hz
PACKAGING (W x D x H)	765 x 665 x 570 (mm)	885 x 770 x 590 (mm)	930 x 850 x 910 (mm)
UNIT (W x D x H)	655 x 590 x 510 (mm)	755 x 700 x 535 (mm)	810 x 765 x 735 (mm)
NET WEIGHT	34kg	40kg	63kg
GROSS WEIGHT	38kg	45kg	75kg
SHIPPING VOLUME	0.29m <sup>3</sup>	0.40m <sup>3</sup>	0.72m <sup>3</sup>
CHAMBER DIMENSIONS	385 x 360 x 370 (mm)	485 x 455 x 400 (mm)	530 x 530 x 580 (mm)
CHAMBER VOLUME	40ℓ	80ℓ	160ℓ
SHELF CAPACITY	5	5	8
MAXIMUM SHELF LOAD	26kg (per shelf)	26kg (per shelf)	26kg (per shelf)

### SPECIFICATIONS

MODEL	278	279
TEMP. VARIATION ACROSS CHAMBER (±°C)	2.5	2.5
POWER	2000W	3000W
VOLTAGE	230V / 50Hz	230V / 50Hz
PACKAGING (W x D x H)	1040 x 880 x 1030 (mm)	1130 x 1060 x 1110 (mm)
UNIT (W x D x H)	910 x 805 x 840 (mm)	1010 x 980 x 935 (mm)
NET WEIGHT	75kg	116kg
GROSS WEIGHT	88kg	133kg
SHIPPING VOLUME	0.94m <sup>3</sup>	1.30m <sup>3</sup>
CHAMBER DIMENSIONS	625 x 580 x 680 (mm)	725 x 775 x 780 (mm)
CHAMBER VOLUME	240ℓ	400ℓ
SHELF CAPACITY	8	10
MAXIMUM SHELF LOAD	20kg (per shelf)	20kg (per shelf)

## ACCESSORIES

### NOTE

Special drying trays, racking systems, programmable controllers, process recorders and custom built stands are available on request

### Accessories for the following Models

220, 221, 222, 223, 224, 275, 276, 277, 278, 279

### ORDER CODES

By Volume

Volume (ℓ)	40	80	160	240	400
DESCRIPTION	CODE				
Chrome plated wire shelf	210	211	212	213	214
Perforated stainless steel shelf	215	216	217	218	219
24hr timer	252	252	252	252	252
Inlet fan for rapid drying	253	253	253	253	253
Timer run down facility	254	254	254	254	254
Outer glass window	256A	256B	256C	256D	256E

## STANDARD INCUBATOR FEATURES

Scientific general purpose incubators are ideal for use in the fields of life science, pharmacy, clinical science, chemistry and biology

- Choice of 5 different capacities
- S/S 430 body construction with S/S 304 interior
- Powder coated mild steel door and control panel
- Slam lock door handle
- Fitted with adjustable hydraulic safety thermostat

### NOTE

- Temperature variation figures are based on no load conditions at 25°C for incubators
- Supplied with x2 shelves



## ECONOMY INCUBATORS

### FEATURES

- General purpose
- Ideal for applications where a lower degree of accuracy is acceptable
- Hydraulic thermostat control
- Operating temperature +37°C to 110°C based on an ambient of 25°C

### SPECIFICATIONS

MODEL	225	226	227
TEMP. VARIATION ACROSS CHAMBER (±°C)	1.0	1.0	1.0
POWER	500W	500W	750W
VOLTAGE	230V / 50Hz	230V / 50Hz	230V / 50Hz
PACKAGING (W x D x H)	765 x 665 x 570 (mm)	885 x 770 x 590 (mm)	930 x 850 x 910 (mm)
UNIT (W x D x H)	655 x 590 x 510 (mm)	755 x 700 x 535 (mm)	810 x 765 x 735 (mm)
NET WEIGHT	34kg	40kg	63kg
GROSS WEIGHT	38kg	45kg	75kg
SHIPPING VOLUME	0.29m <sup>3</sup>	0.41m <sup>3</sup>	0.77m <sup>3</sup>
CHAMBER DIMENSIONS	385 x 360 x 370 (mm)	485 x 455 x 400 (mm)	530 x 530 x 580 (mm)
CHAMBER VOLUME	40ℓ	80ℓ	160ℓ
SHELF CAPACITY	5	5	8
MAXIMUM SHELF LOAD	26kg (per shelf)	26kg (per shelf)	26kg (per shelf)

### SPECIFICATIONS

MODEL	228	229
TEMP. VARIATION ACROSS CHAMBER (±°C)	1.5	1.5
POWER	1000W	1500W
VOLTAGE	230V / 50Hz	230V / 50Hz
PACKAGING (W x D x H)	1040 x 880 x 1030 (mm)	1130 x 1060 x 1110 (mm)
UNIT (W x D x H)	910 x 805 x 840 (mm)	1010 x 980 x 935 (mm)
NET WEIGHT	75kg	116kg
GROSS WEIGHT	88kg	132kg
SHIPPING VOLUME	0.94m <sup>3</sup>	1.33m <sup>3</sup>
CHAMBER DIMENSIONS	620 x 570 x 680 (mm)	725 x 755 x 775 (mm)
CHAMBER VOLUME	240ℓ	400ℓ
SHELF CAPACITY	8	10
MAXIMUM SHELF LOAD	20kg (per shelf)	20kg (per shelf)

## DIGITAL INCUBATORS

### FEATURES

- Ideal for applications where a higher degree of accuracy is required
- Electronic P.I.D temperature control with digital indication of set and process value
- High accuracy PT 100 temperature sensor
- Solid state control relay for optimum reliability and rapid response
- Digital display of set and actual temperature to 0.1°C
- Operating temperature +37°C to 110°C based on an ambient of 25°C
- Temperature variation at a point ±0.3°C

### SPECIFICATIONS

MODEL	295	296	297
TEMP. VARIATION ACROSS CHAMBER (±°C)	1.0	1.0	1.0
POWER	500W	500W	750W
VOLTAGE	230V / 50Hz	230V / 50Hz	230V / 50Hz
PACKAGING (W x D x H)	765 x 665 x 570 (mm)	885 x 770 x 590 (mm)	930 x 850 x 910 (mm)
UNIT (W x D x H)	655 x 590 x 510 (mm)	755 x 700 x 535 (mm)	810 x 765 x 735 (mm)
NET WEIGHT	34kg	40kg	63kg
GROSS WEIGHT	38kg	45kg	75kg
SHIPPING VOLUME	0.29m <sup>3</sup>	0.4m <sup>3</sup>	0.77m <sup>3</sup>
CHAMBER DIMENSIONS	385 x 360 x 370 (mm)	485 x 455 x 400 (mm)	530 x 530 x 580 (mm)
CHAMBER VOLUME	40ℓ	80ℓ	160ℓ
SHELF CAPACITY	5	5	8
MAXIMUM SHELF LOAD	26kg (per shelf)	26kg (per shelf)	26kg (per shelf)

### SPECIFICATIONS

MODEL	298	299
TEMP. VARIATION ACROSS CHAMBER (±°C)	1.5	1.5
POWER	1000W	1500W
VOLTAGE	230V / 50Hz	230V / 50Hz
PACKAGING (W x D x H)	1040 x 880 x 1030 (mm)	1130 x 1060 x 1110 (mm)
UNIT (W x D x H)	910 x 805 x 840 (mm)	1010 x 980 x 935 (mm)
NET WEIGHT	75kg	116kg
GROSS WEIGHT	88kg	132kg
SHIPPING VOLUME	0.94m <sup>3</sup>	1.30m <sup>3</sup>
CHAMBER DIMENSIONS	620 x 570 x 680 (mm)	725 x 755 x 775 (mm)
CHAMBER VOLUME	240ℓ	400ℓ
SHELF CAPACITY	8	10
MAXIMUM SHELF LOAD	20kg (per shelf)	20kg (per shelf)

## ACCESSORIES

### NOTE

Special drying trays, racking systems, programmable controllers, process recorders and custom built stands are available on request

### Accessories for the following Models

225, 226, 227, 228, 229, 295, 296, 297, 298, 299

### ORDER CODES

By Volume

Volume (ℓ)	40	80	160	240	400
DESCRIPTION	CODE				
Chrome plated wire shelf	210	211	212	213	214
Perforated stainless steel shelf	215	216	217	218	219
Inner glass door	240	241	242	243	244
24hr timer	252	252	252	252	252
Inlet fan for rapid drying	253	253	253	253	253
Timer run down facility	254	254	254	254	254
Fan speed reducer	255	255	255	255	255
Outer glass window	256A	256B	256C	256D	256E

# DOUBLE DOOR OVENS & INCUBATORS

## STANDARD OVEN FEATURES

Whether for use in simple drying processes, ageing, curing or general investigations, Scientific ovens provide the ideal solution for diverse thermal applications

- The Scientific range of double door ovens have been designed to complement the single door range
- They are particularly suited to applications where laboratory space and access is limited and a larger unit is required
- Available in 2 sizes
- Two point locking system for effective door sealing
- Available in 4 model types
- All other specifications identical to the comparable single door model
- Full range of accessories available
- Grade 304 S/S interior
- Bodies are constructed from corrosion protected mild steel with an epoxy powder coated finish
- Fitted with adjustable hydraulic safety thermostat

### NOTE

- Temperature variation figures are based on no load conditions at 100°C for ovens
- Supplied with 2 shelves

## ECONOMY OVENS

### FEATURES

- A general purpose oven with a hydraulic thermostat control ideal for applications where accuracy is not critical
- Operating temperature +50°C to 250°C based on an ambient of 25°C
- Temperature variation across chamber ±2.5°C

### MODEL: 223D

240L DOUBLE DOOR - ECONOMY OVEN

#### SPECIFICATIONS

POWER	2000W
VOLTAGE	230V / 50Hz
PACKAGING (W x D x H)	875 x 975 x 1095 (mm)
UNIT (W x D x H)	735 x 800 x 915 (mm)
NET WEIGHT	75kg
GROSS WEIGHT	88kg
SHIPPING VOLUME	0.93m <sup>3</sup>
CHAMBER DIMENSIONS	620 x 565 x 680 (mm)
CHAMBER VOLUME	240ℓ
SHELF CAPACITY	8
MAXIMUM SHELF LOAD	20kg (per shelf)

### MODEL: 224D

400L DOUBLE DOOR - ECONOMY OVEN

#### SPECIFICATIONS

POWER	3000W
VOLTAGE	230V / 50Hz
PACKAGING (W x D x H)	1055 x 980 x 1215 (mm)
UNIT (W x D x H)	835 x 975 x 1020 (mm)
NET WEIGHT	116kg
GROSS WEIGHT	125kg
SHIPPING VOLUME	1.26m <sup>3</sup>
CHAMBER DIMENSIONS	715 x 740 x 780 (mm)
CHAMBER VOLUME	400ℓ
SHELF CAPACITY	10
MAXIMUM SHELF LOAD	20kg (per shelf)

## DIGITAL OVENS

### FEATURES

- Electronic P.I.D temperature control with digital indication of set and process value
- High accuracy PT 100 temperature sensor
- Solid state control relay for optimum reliability and rapid response
- Operating temperature +50°C to 250°C based on an ambient of 25°C
- Temperature variation across chamber ±2.5°C
- Temperature variation at a point ±0.3°C

### MODEL: 278D

240L DOUBLE DOOR - DIGITAL OVEN

#### SPECIFICATIONS

POWER	2000W
VOLTAGE	230V / 50Hz
PACKAGING (W x D x H)	875 x 975 x 1095 (mm)
UNIT (W x D x H)	735 x 800 x 915 (mm)
NET WEIGHT	75kg
GROSS WEIGHT	88kg
SHIPPING VOLUME	0.93m <sup>3</sup>
CHAMBER DIMENSIONS	620 x 565 x 680 (mm)
CHAMBER VOLUME	240ℓ
SHELF CAPACITY	8
MAXIMUM SHELF LOAD	20kg (per shelf)

### MODEL: 279D

400L DOUBLE DOOR - DIGITAL OVEN

#### SPECIFICATIONS

POWER	3000W
VOLTAGE	230V / 50Hz
PACKAGING (W x D x H)	1055 x 980 x 1215 (mm)
UNIT (W x D x H)	835 x 975 x 1020 (mm)
NET WEIGHT	116kg
GROSS WEIGHT	125kg
SHIPPING VOLUME	1.26m <sup>3</sup>
CHAMBER DIMENSIONS	715 x 740 x 780 (mm)
CHAMBER VOLUME	400ℓ
SHELF CAPACITY	10
MAXIMUM SHELF LOAD	20kg (per shelf)



Model 223D



Model 278D

## ACCESSORIES

### NOTE

Special drying trays, racking systems, programmable controllers, process recorders and custom built stands are available on request

#### Accessories for the following Models

223D, 224D, 278D, 279D

### ORDER CODES

By Volume

Volume (ℓ)	240	400
DESCRIPTION	CODE	
Chrome plated wire shelf	213	214
Perforated stainless steel shelf	218	219
24hr timer	252	252
Inlet fan for rapid drying	253	253
Timer run down facility	254	254



## STANDARD INCUBATOR FEATURES

Scientific general purpose incubators are ideal for use in the fields of life science, pharmacy, clinical science, chemistry and biology

- The Scientific range of double door incubators have been designed to complement the single door range
- They are particularly suited to applications where laboratory space and access is limited and a larger unit is required
- Available in 2 sizes
- Two point locking system for effective door sealing
- Available in 4 model types
- All other specifications identical to the comparable single door model
- Full range of accessories available
- Grade 304 S/S interior
- Bodies are constructed from corrosion protected mild steel with an epoxy powder coated finish
- Fitted with adjustable hydraulic safety thermostat

### NOTE

- Temperature variation figures are based on no load conditions at 25°C
- Supplied with 2 shelves

## ECONOMY INCUBATORS

### FEATURES

- General purpose
- Ideal for applications where a lower degree of accuracy is acceptable
- Hydraulic thermostat control
- Operating temperature +37°C to 110°C based on an ambient of 25°C
- Temperature variation across chamber ±1.5°C

### MODEL: 228D

240L DOUBLE DOOR - ECONOMY INCUBATOR

#### SPECIFICATIONS

POWER	1000W
VOLTAGE	230V / 50Hz
PACKAGING (W x D x H)	875 x 975 x 1095 (mm)
UNIT (W x D x H)	735 x 800 x 915 (mm)
NET WEIGHT	75kg
GROSS WEIGHT	88kg
SHIPPING VOLUME	0.93m <sup>3</sup>
CHAMBER DIMENSIONS	620 x 565 x 680 (mm)
CHAMBER VOLUME	240ℓ
SHELF CAPACITY	8
MAXIMUM SHELF LOAD	20kg (per shelf)

### MODEL: 229D

400L DOUBLE DOOR - ECONOMY INCUBATOR

#### SPECIFICATIONS

POWER	1500W
VOLTAGE	230V / 50Hz
PACKAGING (W x D x H)	1055 x 980 x 1215 (mm)
UNIT (W x D x H)	835 x 975 x 1020 (mm)
NET WEIGHT	116kg
GROSS WEIGHT	125kg
SHIPPING VOLUME	1.26m <sup>3</sup>
CHAMBER DIMENSIONS	715 x 740 x 780 (mm)
CHAMBER VOLUME	400ℓ
SHELF CAPACITY	10
MAXIMUM SHELF LOAD	20kg (per shelf)

## DIGITAL INCUBATORS

### FEATURES

- Ideal for applications where a higher degree of accuracy is required
- Electronic P.I.D temperature control with digital indication of set and process value
- High accuracy PT 100 temperature sensor
- Solid state control relay for optimum reliability and rapid response
- Digital display of set and actual temperature to 0.1°C
- Operating temperature +37°C to 110°C based on an ambient of 25°C
- Temperature variation across chamber ±1.5°C
- Temperature variation at a point ±0.3°C

### MODEL: 298D

240L DOUBLE DOOR - DIGITAL INCUBATOR

#### SPECIFICATIONS

POWER	1000W
VOLTAGE	230V / 50Hz
PACKAGING (W x D x H)	875 x 975 x 1095 (mm)
UNIT (W x D x H)	735 x 800 x 915 (mm)
NET WEIGHT	75kg
GROSS WEIGHT	88kg
SHIPPING VOLUME	0.93m <sup>3</sup>
CHAMBER DIMENSIONS	620 x 565 x 680 (mm)
CHAMBER VOLUME	240ℓ
SHELF CAPACITY	8
MAXIMUM SHELF LOAD	20kg (per shelf)

### MODEL: 299D

400L DOUBLE DOOR - DIGITAL INCUBATOR

#### SPECIFICATIONS

POWER	1500W
VOLTAGE	230V / 50Hz
PACKAGING (W x D x H)	1055 x 980 x 1215 (mm)
UNIT (W x D x H)	835 x 975 x 1020 (mm)
NET WEIGHT	116kg
GROSS WEIGHT	125kg
SHIPPING VOLUME	1.26m <sup>3</sup>
CHAMBER DIMENSIONS	715 x 740 x 780 (mm)
CHAMBER VOLUME	400ℓ
SHELF CAPACITY	10
MAXIMUM SHELF LOAD	20kg (per shelf)



Model 228D



Model 298D

## ACCESSORIES

### NOTE

Special drying trays, racking systems, programmable controllers, process recorders and custom built stands are available on request

### Accessories for the following Models

228D, 229D, 298D, 299D

### ORDER CODES

By Volume

Volume (ℓ)	240	400
DESCRIPTION	CODE	
Chrome plated wire shelf	213	214
Perforated stainless steel shelf	218	219
24hr timer	252	252
Inlet fan for rapid drying	253	253
Timer run down facility	254	254
Fan speed reducer	255	255



# VERTICAL OVENS AND INCUBATORS

Vertical Ovens and Incubators that can be used for simple drying processes, ageing, curing or general investigations. Scientific units provide the ideal solution for diverse thermal applications.

## ECONOMY VERTICAL OVEN & INCUBATOR

### FEATURES

- General purpose
- Grade 304 S/S interior
- Bodies are constructed from corrosion protected mild steel with an epoxy powder coated finish
- Sized to fit through a standard width door frame
- Ideal for applications where a lower degree of accuracy is acceptable
- Fitted with adjustable hydraulic safety thermostat
- Temperature variation & figures are based on load conditions at 25°C for incubators and 100°C for ovens

### OVEN

- Operating temperature +50°C to 250°C based on an ambient of 25°C
- Temperature variation across chamber ±2.5°C

### INCUBATOR

- Operating temperature +37°C to 110°C based on an ambient of 25°C
- Temperature variation across chamber ±1.5°C

### MODEL: 224V

400L VERTICAL - ECONOMY OVEN

#### SPECIFICATIONS

POWER	3000W
VOLTAGE	230V / 50Hz
PACKAGING (W x D x H)	940 x 850 x 1520 (mm)
UNIT (W x D x H)	735 x 795 x 1325 (mm)
NET WEIGHT	116kg
GROSS WEIGHT	120kg
SHIPPING VOLUME	1.21m <sup>3</sup>
CHAMBER DIMENSIONS	620 x 70 x 985 (mm)
CHAMBER VOLUME	400ℓ
SHELF CAPACITY	10
MAXIMUM SHELF LOAD	20kg (per shelf)

### MODEL: 229V

400L VERTICAL - ECONOMY INCUBATOR

#### SPECIFICATIONS

POWER	1500W
VOLTAGE	230V / 50Hz
PACKAGING (W x D x H)	940 x 850 x 1520 (mm)
UNIT (W x D x H)	735 x 795 x 1325 (mm)
NET WEIGHT	116kg
GROSS WEIGHT	120kg
SHIPPING VOLUME	1.21m <sup>3</sup>
CHAMBER DIMENSIONS	620 x 570 x 985 (mm)
CHAMBER VOLUME	400ℓ
SHELF CAPACITY	10
MAXIMUM SHELF LOAD	20kg (per shelf)



Model 224V

## DIGITAL VERTICAL OVEN & INCUBATOR

### FEATURES

- Ideal for applications where a higher degree of accuracy is required
- Electronic P.I.D temperature control with digital indication of set and process value
- High accuracy PT 100 temperature sensor
- Solid state control relay for optimum reliability and rapid response

### OVEN

- Operating temperature +50°C to 250°C based on an ambient of 25°C
- Temperature variation across chamber ±2.5°C
- Temperature variation at a point ±0.3°C

### INCUBATOR

- Operating temperature +37°C to 110°C based on an ambient of 25°C
- Temperature variation across chamber ±1.5°C
- Temperature variation at a point ±0.3°C



Model 279V

### MODEL: 279V

400L VERTICAL - DIGITAL OVEN

#### SPECIFICATIONS

POWER	3000W
VOLTAGE	230V / 50Hz
PACKAGING (W x D x H)	940 x 850 x 1520 (mm)
UNIT (W x D x H)	735 x 795 x 1325 (mm)
NET WEIGHT	116kg
GROSS WEIGHT	120kg
SHIPPING VOLUME	1.21m <sup>3</sup>
CHAMBER DIMENSIONS	620 x 570 x 985 (mm)
CHAMBER VOLUME	400ℓ
SHELF CAPACITY	10
MAXIMUM SHELF LOAD	20kg (per shelf)

### MODEL: 299V

400L VERTICAL - DIGITAL INCUBATOR

#### SPECIFICATIONS

POWER	1500W
VOLTAGE	230V / 50Hz
PACKAGING (W x D x H)	940 x 850 x 1520 (mm)
UNIT (W x D x H)	735 x 795 x 1325 (mm)
NET WEIGHT	116kg
GROSS WEIGHT	120kg
SHIPPING VOLUME	1.21m <sup>3</sup>
CHAMBER DIMENSIONS	620 x 570 x 985 (mm)
CHAMBER VOLUME	400ℓ
SHELF CAPACITY	10
MAXIMUM SHELF LOAD	20kg (per shelf)

## ACCESSORIES

### NOTE

Special drying trays, racking systems, programmable controllers and process recorders are available on request

### Accessories for the following Models

OVENS: 224V, 279V  
INCUBATORS: 229V, 299V

### ORDER CODES

By Volume

Volume (ℓ)	400
DESCRIPTION	CODE
Chrome plated wire shelf	213
Perforated stainless steel shelf	218
Inner glass door (Incubator only)	244V
24hr timer	252
Inlet fan for rapid drying	253
Timer run down facility	254
Fan speed reducer (Incubator only)	255



# INDUSTRIAL OVENS

These robust and reliable industrial ovens are intended for a variety of drying and curing operations. They can be found in the mining, pharmaceutical and general industry sectors. Two model sizes are available. The 700 litre units operate on a forced draught air circulating system whilst the 1400 litre models incorporate a 3 wall system to ensure uniform temperature throughout the heated space. Each unit can be supplied in either digital or economy versions.

## FEATURES

- Grade 304 stainless steel interior
- Fully adjustable shelf height
- Doors mounted on robust hinges for effective sealing
- Long lasting silicon door seal
- All bodies are constructed from corrosion protected mild steel with an epoxy powder coated finish
- Special purpose shelves or drying trays manufactured to customer specifications if required
- Hydraulic safety thermostat and control circuit breakers fitted to all models

## NOTE

- Temperature variation figures are based on no load conditions at 100°C

## ECONOMY OVENS

### FEATURES

- Ideal for applications where a lower degree of accuracy is acceptable
- Hydraulic thermostat control
- Operating temperature +50°C to 250°C based on an ambient of 25°C
- Temperature variation across chamber ±2.5°C

### NOTE

- Models 386 and 388 come standard with 2 shelves
- Model 363 comes standard with 8 shelves

### MODEL: 386

700L ECONOMY OVEN

#### SPECIFICATIONS

POWER	6kW
VOLTAGE	380V / 50Hz / 2P / N / E
PACKAGING (W x D x H)	1090 x 1105 x 1630 (mm)
UNIT (W x D x H)	1090 x 1070 x 1630 (mm)
NET WEIGHT	180kg
GROSS WEIGHT	181kg
SHIPPING VOLUME	1.96m <sup>3</sup>
CHAMBER DIMENSIONS	750 x 815 x 1220 (mm)
CHAMBER VOLUME	700ℓ
SHELF CAPACITY	15
MAXIMUM SHELF LOAD	20kg

### MODEL: 388

700L ECONOMY OVEN

#### SPECIFICATIONS

POWER	3kW
VOLTAGE	230V / 50Hz
PACKAGING (W x D x H)	1090 x 1105 x 1630 (mm)
UNIT (W x D x H)	1090 x 1070 x 1630 (mm)
NET WEIGHT	180kg
GROSS WEIGHT	181kg
SHIPPING VOLUME	1.96m <sup>3</sup>
CHAMBER DIMENSIONS	750 x 815 x 1220 (mm)
CHAMBER VOLUME	700ℓ
SHELF CAPACITY	15
MAXIMUM SHELF LOAD	20kg

### MODEL: 363

1400L ECONOMY OVEN

#### SPECIFICATIONS

POWER	12kW
VOLTAGE	380V / 50Hz / 3P / N / E
PACKAGING (W x D x H)	1755 x 1210 x 2010 (mm)
UNIT (W x D x H)	1755 x 1175 x 2010 (mm)
NET WEIGHT	480kg
GROSS WEIGHT	481kg
SHIPPING VOLUME	5.58m <sup>3</sup>
CHAMBER DIMENSIONS	1215 x 910 x 1215 (mm) (Two Openings 550 x 1215 (mm))
CHAMBER VOLUME	1400ℓ
SHELF CAPACITY	26
MAXIMUM SHELF LOAD	23kg

Model 386



Model 363



## DIGITAL OVENS

### FEATURES

- Electronic P.I.D temperature control with digital indication of set and process value
- High accuracy PT 100 temperature sensor
- Ideal for applications where a higher degree of accuracy is required
- Multi stage heating
- Solid state control relays for optimum reliability and rapid response
- Weekly programmable timer
- Operating temperature +50°C to 250°C based on an ambient of 25°C

- Temperature variation across chamber ±2.5°C
- Temperature variation at a point ±0.3°C

### NOTE

- Models 385 and 387 come standard with 5 shelves
- Models 362 comes standard with 16 shelves

### MODEL: 385

700L DIGITAL OVEN

#### SPECIFICATIONS

POWER	6kW
VOLTAGE	380V / 50Hz / 2P / N / E
PACKAGING (W x D x H)	1090 x 1105 x 1630 (mm)
UNIT (W x D x H)	1090 x 1070 x 1630 (mm)
NET WEIGHT	180kg
GROSS WEIGHT	181kg
SHIPPING VOLUME	1.96m <sup>3</sup>
CHAMBER DIMENSIONS	750 x 815 x 1220 (mm)
CHAMBER VOLUME	700ℓ
SHELF CAPACITY	15
MAXIMUM SHELF LOAD	20kg

### MODEL: 362

1400L DIGITAL OVEN

#### SPECIFICATIONS

POWER	12kW
VOLTAGE	380V / 50Hz / 3P / N / E
PACKAGING (W x D x H)	1755 x 1210 x 2010 (mm)
UNIT (W x D x H)	1755 x 1175 x 2010 (mm)
NET WEIGHT	480kg
GROSS WEIGHT	481kg
SHIPPING VOLUME	4.27m <sup>3</sup>
CHAMBER DIMENSIONS	1215 x 910 x 1215 (mm) - Two Openings 550 x 1215 (mm)
CHAMBER VOLUME	1400ℓ
SHELF CAPACITY	26
MAXIMUM SHELF LOAD	23kg

### MODEL: 387

700L DIGITAL OVEN

#### SPECIFICATIONS

POWER	3kW
VOLTAGE	230V / 50Hz
PACKAGING (W x D x H)	1090 x 1105 x 1630 (mm)
UNIT (W x D x H)	1090 x 1070 x 1630 (mm)
NET WEIGHT	180kg
GROSS WEIGHT	181kg
SHIPPING VOLUME	1.96m <sup>3</sup>
CHAMBER DIMENSIONS	750 x 815 x 1220 (mm)
CHAMBER VOLUME	700ℓ
SHELF CAPACITY	15
MAXIMUM SHELF LOAD	20kg

## ACCESSORIES

### NOTE

Special drying trays, racking systems, programmable controllers, process recorders and custom built stands are available on request

All models are available with Stainless steel outer bodies on request

All units being exported or transported out of Gauteng should be crated  
Crating prices available on request

### Accessories for the following Models

OVENS: 386, 388, 363, 385, 362, 387

### ORDER CODES

By Volume

Volume (ℓ)	700	1400
DESCRIPTION	CODE	
Extra chrome plate wire shelf	311A	312
Extraction Fan	313	313

Model 385



# INDUSTRIAL OVEN

This robust and reliable industrial oven is intended for a variety of drying and curing operations. Convenient loading and off-loading with purpose built push in trolley.

## FEATURES

- Doors mounted on robust hinges for effective sealing
- Long lasting silicon door seal
- The body is constructed from corrosion protected mild steel with an epoxy powder coated finish
- Ideal for applications where a large volume of product is required
- Electronic P.I.D temperature control with digital indication of set and process value
- High accuracy PT 100 temperature sensor
- Solid state control relay for optimum reliability and rapid response
- Grade 304 stainless steel interior
- Operating temperature +50°C to 150°C based on an ambient of 25°C
- Temperature variation across chamber ±2.5°C
- Temperature variation at a point ±0.3°C
- Fitted with adjustable hydraulic safety thermostat

### NOTE

- Supplied with one 304 Stainless Steel trolley with 7 fixed perforated shelves

## MODEL: 620

2000L DIGITAL DRYING OVEN

### SPECIFICATIONS

POWER	12kW
VOLTAGE	380V / 50Hz / 3P / N / E
PACKAGING (W x D x H)	1650 x 1370 x 2305 (mm)
UNIT (W x D x H)	1530 x 1340 x 2160 (mm)
NET WEIGHT	620kg
GROSS WEIGHT	660kg
SHIPPING VOLUME	5.21m <sup>3</sup>
CHAMBER DIMENSIONS	1140 x 1105 x 1800 (mm)
CHAMBER VOLUME	2000ℓ
SHELF CAPACITY	7
MAXIMUM SHELF LOAD	100kg

TROLLEY DIMENSIONS	1030 x 905 x 1680 (mm)
TROLLEY SHELF SIZE	980 x 855 x 25 (mm)



Model 620

## ACCESSORIES

### NOTE

Special drying trays, racking systems, programmable controllers and process recorders are available on request

All units being exported or transported out of Gauteng should be crated  
Crating prices available on request

### Accessories for the following Model

OVEN: 620

### ORDER CODES

By Volume

Volume (ℓ)	2000
DESCRIPTION	CODE
Extra Trolley	621

# INDUSTRIAL INCUBATOR

The industrial incubator is ideally suited for applications where a larger volume incubator is required, in fields of life science, pharmacy, clinical science, chemistry and biology.

## DIGITAL INCUBATOR

### FEATURES

- Grade 304 stainless steel interior
- Fully adjustable shelf height
- Doors mounted on robust hinges for effective sealing
- Long lasting silicon door seal
- The body is constructed from corrosion protected mild steel with an epoxy powder coated finish
- Hydraulic safety thermostat and control circuit breakers fitted
- Electronic P.I.D temperature control with digital indication of set and process value
- Solid state switching for improved reliability and rapid response
- High accuracy PT 100 temperature sensor
- Ideal for applications where a higher degree of accuracy is required
- Weekly programmable timer
- Fitted with adjustable hydraulic safety thermostat
- Temperature variation across chamber ±2.5°C
- Temperature variation at a point ±0.3°C
- This unit does not require 3 phase power and is a 230V single phase unit
- Operating temperature +37°C to 110°C based on an ambient of 25°C

### NOTE

- Temperature variation figures are based on no load conditions at 25°C
- Model 389 comes standard with 5 shelves

## MODEL: 389

700L DIGITAL INCUBATOR

### SPECIFICATIONS

POWER	1.5kW
VOLTAGE	230V / 50Hz
PACKAGING (W x D x H)	1090 x 1105 x 1630 (mm)
UNIT (W x D x H)	1090 x 1070 x 1630 (mm)
NET WEIGHT	180kg
GROSS WEIGHT	181kg
SHIPPING VOLUME	1.96m <sup>3</sup>
CHAMBER DIMENSIONS	750 x 815 x 1220 (mm)
CHAMBER VOLUME	700ℓ
SHELF CAPACITY	15
MAXIMUM SHELF LOAD	20kg



Model 389

## ACCESSORIES

### NOTE

Special drying trays, racking systems, programmable controllers, process recorders and custom built stands are available on request

Available with Stainless steel outer body on request

All units being exported or transported out of Gauteng should be crated

Crating prices available on request

### Accessories for the following Model

INCUBATOR: 389

### ORDER CODES

By Volume

Volume (ℓ)	700
DESCRIPTION	CODE
Extra chrome plate wire shelf	311A
Extraction fan	313
Inner glass door	364

# MUFFLE FURNACES

The Scientific general purpose laboratory furnaces are ideal for a wide range of applications. The units are robustly constructed and fitted with high quality components for reliable operation. For special applications please contact our technical department for advice.

## FEATURES

- Electronic P.I.D temperature control with digital indication of set and process value
- Solid state switching for improved reliability and rapid response
- Independent over temperature safety system
- Independent sensors for control and safety using type n duplex thermocouple
- Maximum continuous operating temperature 1150°C
- Easily replaceable side wall mounted slab elements
- Automatic cut out switch on door opening deactivates element
- Door mounted temperature sampling port for easy validation, thus retaining heat inside the chamber
- Robust construction with slide out control panel for ease of service
- Available in 9 litre and 30 litre capacity

- Optional programmable controllers
- High thermal efficiency ceramic insulation coupled to double skin construction ensures cool to touch exterior panels
- Out and up door with vertically counterbalanced action protects operator from potential burns
- Ashing option available

## NOTE

- Prior to ordering please advise on application



Model 909



## MODEL: 930

30L MUFFLE FURNACE - SLAB ELEMENT

### SPECIFICATIONS

POWER	5000W
VOLTAGE	380V / 50Hz / 2Phase / N / Earth
PACKAGING (W x D x H)	850 x 950 x 939 (mm)
UNIT (W x D x H)	690 x 820 x 730 (mm)
NET WEIGHT	68kg
GROSS WEIGHT	78kg
SHIPPING VOLUME	0.76m <sup>3</sup>
CHAMBER DIMENSIONS	300 x 450 x 205 (mm)
CHAMBER VOLUME	30ℓ
MAX CONTINUOUS TEMP.	1150°C
MAX TEMPERATURE	1200°C

## MODEL: 909

9L MUFFLE FURNACE - SLAB ELEMENT

### SPECIFICATIONS

POWER	3300W
VOLTAGE	230V / 50Hz
PACKAGING (W x D x H)	850 x 950 x 910 (mm)
UNIT (W x D x H)	570 x 660 x 695 (mm)
NET WEIGHT	50kg
GROSS WEIGHT	60kg
SHIPPING VOLUME	0.7m <sup>3</sup>
CHAMBER DIMENSIONS	195 x 300 x 155 (mm)
CHAMBER VOLUME	9ℓ
MAX CONTINUOUS TEMP.	1150°C
MAX TEMPERATURE	1200°C

# HIGH TEMPERATURE FURNACES

The Scientific high temperature furnaces are designed for use with aggressive fluxes in bead preparation for XRF analysis. The units are robustly constructed and fitted with high quality components for reliable operation. For special applications please contact our technical department for advice.

## FEATURES

- Electronic P.I.D temperature control with digital indication of set and process value
- Solid state switching for improved reliability and rapid response
- Independent over temperature safety system
- Independent sensors for control and safety using type R duplex thermocouple
- Automatic cut out switch on door opening deactivates element
- Door mounted temperature sampling port for easy validation thus, retaining heat inside the chamber
- Robust construction with slide out control panel for ease of service
- 15 litre capacity
- Optional programmable controllers
- High thermal efficiency ceramic insulation coupled to double skin construction ensures cool to touch exterior panels

- Out and up door with vertically counterbalanced action protects operator from potential burns
- Ashing option available
- Silicone Carbide heating elements mounted across the top of the chamber

## NOTE

- Prior to ordering please advise on application.
- Elements are packed separately and require installation and connection on site by qualified technician
- Model 931 maximum temperature 1400°C
- Model 932 maximum temperature 1500°C



Model 931

## MODEL: 931

15L HIGH TEMPERATURE FURNACE

### SPECIFICATIONS

POWER	5500W
VOLTAGE	380V / 50Hz / 2Phase / N / Earth
PACKAGING (W x D x H)	850 x 950 x 939 (mm)
UNIT (W x D x H)	690 x 820 x 730 (mm)
NET WEIGHT	68kg
GROSS WEIGHT	78kg
SHIPPING VOLUME	0.76m <sup>3</sup>
CHAMBER DIMENSIONS	210 x 400 x 180 (mm)
CHAMBER VOLUME	15ℓ
MAX TEMPERATURE	1400°C

## MODEL: 932

15L HIGH TEMPERATURE FURNACE

### SPECIFICATIONS

POWER	6500W
VOLTAGE	380V / 50Hz / 2Phase / N / Earth
PACKAGING (W x D x H)	850 x 950 x 939 (mm)
UNIT (W x D x H)	690 x 820 x 730 (mm)
NET WEIGHT	68kg
GROSS WEIGHT	78kg
SHIPPING VOLUME	0.76m <sup>3</sup>
CHAMBER DIMENSIONS	210 x 400 x 180 (mm)
CHAMBER VOLUME	15ℓ
MAX TEMPERATURE	1500°C

## VOLATILE & ASHING FURNACES

The Scientific volatile test furnaces are for testing contamination levels of coal due to amount of volatiles produced before oxidation. Design allows for fast heating as specified by test methods. The Scientific coal ash furnaces are for determination of coal ash in preheated airflow for improved uniformity as required by relevant test methods.

### FEATURES

- Digital setpoint control with digital indication of set value
- Solid state switching for improved reliability and rapid response
- Control using K type thermocouple
- Maximum continuous operating temperature 1000°C
- Easily replaceable side wall mounted slab elements
- Door mounted temperature sampling port for easy validation, thus retaining heat inside the chamber
- High thermal efficiency ceramic insulation coupled to double skin construction ensures cool to touch exterior panels

### NOTE

- Prior to ordering please advise on application.



Model 905

### MODEL: 908

7.6L ASHING FURNACE

#### SPECIFICATIONS

POWER	3500W
VOLTAGE	230V / 50Hz
PACKAGING (W x D x H)	On Application
UNIT (W x D x H)	680 x 495 x 515 (mm)
NET WEIGHT	50kg
GROSS WEIGHT	60kg
SHIPPING VOLUME	0.17m <sup>3</sup>
CHAMBER DIMENSIONS	170 x 450 x 100 (mm)
CHAMBER VOLUME	7.6ℓ
MAX CONTINUOUS TEMPERATURE	1000°C

### MODEL: 905

5L VOLATILE FURNACE

#### SPECIFICATIONS

POWER	3500W
VOLTAGE	230V / 50Hz
PACKAGING (W x D x H)	On Application
UNIT (W x D x H)	480 x 495 x 515 (mm)
NET WEIGHT	50kg
GROSS WEIGHT	60kg
SHIPPING VOLUME	0.12m <sup>3</sup>
CHAMBER DIMENSIONS	200 x 240 x 100 (mm)
CHAMBER VOLUME	5ℓ
MAX CONTINUOUS TEMPERATURE	1000°C

## ECONOMY FURNACE

The Scientific economy furnace is used for the following applications annealing, ashing, calcination, curing, drying, loss on ignition, sintering and fusion.

### FEATURES

- Electronic P.I.D temperature control with digital indication of set and process value
- Solid state switching for improved reliability and rapid response
- Control using type K thermocouple
- Maximum continuous operating temperature 1000°C
- Easily replaceable side wall mounted slab elements
- Door mounted temperature sampling port for easy validation, thus retaining heat inside the chamber
- High thermal efficiency ceramic insulation coupled to double skin construction ensures cool to touch exterior panels

### MODEL: 916

16L ECONOMY FURNACE

#### SPECIFICATIONS

POWER	3300W
VOLTAGE	230V / 50Hz
PACKAGING (W x D x H)	On Application
UNIT (W x D x H)	490 x 580 x 520 (mm)
NET WEIGHT	50kg
GROSS WEIGHT	60kg
SHIPPING VOLUME	0.15m <sup>3</sup>
CHAMBER DIMENSIONS	300 x 300 x 185 (mm)
CHAMBER VOLUME	16ℓ
MAX CONTINUOUS TEMPERATURE	1000°C

## COOLED INCUBATORS

The Scientific range of robust cooled incubators are available in two sizes. The units are ideal for use in cultivating low temperature microbes and plant cells, general pharmacy, clinical science and biology.

### FEATURES

- Electronic P.I.D temperature control with digital indication of set and process value
- High accuracy PT 100 temperature sensor
- Solid state control relay for optimum reliability and rapid response
- Reliable refrigeration system with high quality compressor and components
- Grade 304 stainless steel interior
- Fully adjustable shelf heights
- Forced air circulation for excellent temperature uniformity
- High quality silicon door seal to minimise heat loss
- Automatic defrost function

### NOTE

- Model 354 is supplied with 2 chrome plated wire shelves
- Model 356 is supplied with 4 chrome plated wire shelves
- Optional inner glass viewing door for sample inspection without affecting chamber temperature
- Operating temperatures based on an ambient of 25°C



Model 354

Model 356

### MODEL: 354

150L COOLED INCUBATOR

#### SPECIFICATIONS

POWER	1100W
VOLTAGE	230V / 50Hz
PACKAGING (W x D x H)	800 x 810 x 1090 (mm)
UNIT (W x D x H)	685 x 755 x 890 (mm)
NET WEIGHT	82kg
GROSS WEIGHT	90kg
SHIPPING VOLUME	0.71m <sup>3</sup>
CHAMBER DIMENSIONS	595 x 495 x 495 (mm)
CHAMBER VOLUME	150ℓ
SHELF CAPACITY	7 with 50mm Spaces
REFRIGERANT	134a
TEMPERATURE RANGE	-10°C to +60°C

### MODEL: 356

400L COOLED INCUBATOR

#### SPECIFICATIONS

POWER	1200W
VOLTAGE	230V / 50Hz
PACKAGING (W x D x H)	760 x 880 x 1960 (mm)
UNIT (W x D x H)	685 x 810 x 1820 (mm)
NET WEIGHT	100kg
GROSS WEIGHT	104kg
SHIPPING VOLUME	1.31m <sup>3</sup>
CHAMBER DIMENSIONS	595 x 495 x 1305 (mm)
CHAMBER VOLUME	400ℓ
SHELF CAPACITY	21 with 50mm spacing
REFRIGERANT	404
TEMPERATURE RANGE	0°C to +60°C

## ACCESSORIES

### NOTE

Perforated trays available on request

### Accessories for the following Models

354, 356

### ORDER CODES

By Volume

Volume (ℓ)	150	400
DESCRIPTION	CODE	
Extra chrome plated wire shelf	361	361A
Inner glass door	359	360

# GROWTH CHAMBERS

This range of growth chambers have been designed for experimentation in the growth of plants, animals and insects. The controls are easy to set for all desired parameters of light and temperature.

## FEATURES

- Electronic P.I.D temperature control with digital indication of set and process value
- Fully adjustable day/night and temperature - time settings
- High accuracy PT 100 temperature sensor
- Solid state control relay for optimum reliability and rapid response
- Reliable refrigeration system with high quality compressor and components
- Grade 304 stainless steel interior
- Temperature range 0°C to +60°C
- Fully adjustable shelf heights
- Forced air circulation for excellent temperature uniformity
- Inner glass viewing door for sample inspection without affecting chamber temperature
- High quality silicon door seal to minimize heat loss
- Independently controlled Grolux lighting allowing the selection of different lux levels via a rocker switch
- Automatic defrost function
- Weekly programmable timer

## NOTE

- Model 357 is supplied with 2 chrome plated wire shelves and model 358 with 4 shelves
- Refrigerant 134a on model 357 and 358 with 404 refrigerant
- Operating temperatures based on an ambient of 25°C

## MODEL: 357

150L GROWTH CHAMBER

### SPECIFICATIONS

POWER	1220W
VOLTAGE	230V / 50Hz
PACKAGING (W x D x H)	800 x 810 x 1090 (mm)
UNIT (W x D x H)	685 x 755 x 890 (mm)
NET WEIGHT	82kg
GROSS WEIGHT	90kg
SHIPPING VOLUME	0.71m <sup>3</sup>
CCHAMBER DIMENSIONS	595 x 495 x 495 (mm)
CHAMBER VOLUME	150ℓ
SHELF CAPACITY	7 with 50mm Spaces
TOTAL LIGHTING	1000 Lux
TEMPERATURE RANGE	0°C to +60°C

## MODEL: 358

400L GROWTH CHAMBER

### SPECIFICATIONS

POWER	1530W
VOLTAGE	230V / 50Hz
PACKAGING (W x D x H)	760 x 880 x 1960 (mm)
UNIT (W x D x H)	685 x 810 x 1820 (mm)
NET WEIGHT	100kg
GROSS WEIGHT	104kg
SHIPPING VOLUME	1.31m <sup>3</sup>
CHAMBER DIMENSIONS	595 x 495 x 1305 (mm)
CHAMBER VOLUME	400ℓ
SHELF CAPACITY	21 with 50mm spacing
TOTAL LIGHTING	1000 Lux
TEMPERATURE RANGE	0°C to +60°C



# ACCESSORIES

## NOTE

Perforated trays available on request

**Accessories for the following Models**  
357, 358

## ORDER CODES

By Volume

Volume (ℓ)	150	400
DESCRIPTION	CODE	
Extra chrome plated wire shelf	361	361A

# SHAKING INCUBATORS

This range of orbital shaking incubators comprises of two models depending on the required temperature range. The units are ideal for a wide variety of laboratory experimentation in fields such as molecular biology, plant and animal cell culture and microbiology.

## FEATURES

- Electronic P.I.D temperature control with digital indication of set and process value
- High accuracy PT 100 temperature sensor
- Solid state control relay for optimum reliability and rapid response
- Micro processor based speed control for high stability with digital indication of RPM
- 120 minute timer with infinity override position for continuous operation if required
- Forced air circulation for excellent temperature uniformity
- Grade 304 stainless steel interior
- Loose rubber mat fitted to platform
- Safety cut out on the shaking platform when door is opened
- Counterbalanced drive system ensures smooth running under all loads

## Specific features model 353

- Supplied with one chrome plated shelf and a shaking platform (size 480mm x 380mm) with four adjustable clamping bars
- 30kg load capacity
- Temperature range 37°C to 60°C

## Specific features model 355

- Supplied with one chrome plated shelf and a shaking platform (size 480mm x 380mm) with four adjustable clamping bars
- 30kg load capacity
- Temperature range 0°C to 60°C
- Reliable refrigeration system with high quality compressor and components
- Automatic defrost function

## Specific features model 260

- Standard unit supplied with platform (size 395mm x 295mm) and 4 adjustable clamping bars
- 8kg load capacity
- Viewing window mounted in lift up cover
- Safety cut out switch stops the platform when the lid is opened
- Temperature range 37°C to 60°C

## NOTE

- Flask holding clamps available as accessories
- Operating temperatures based on an ambient of 25°C

## MODEL: 353

150L SHAKING INCUBATOR

### SPECIFICATIONS

POWER	1100W
VOLTAGE	230V / 50Hz
PACKAGING (W x D x H)	800 x 800 x 1080 (mm)
UNIT (W x D x H)	685 x 760 x 890 (mm)
NET WEIGHT	98kg
GROSS WEIGHT	108kg
SHIPPING VOLUME	0.69m <sup>3</sup>
CHAMBER DIMENSIONS	595 x 495 x 495 (mm)
CHAMBER VOLUME	150ℓ
SHELF CAPACITY	5 with 50mm spaces
RPM	10-250
PLATFORM SIZE	480 x 380 (mm)

## MODEL: 355

150L SHAKING INCUBATOR

### SPECIFICATIONS

POWER	1100W
VOLTAGE	230V / 50Hz
PACKAGING (W x D x H)	800 x 800 x 1080 (mm)
UNIT (W x D x H)	685 x 760 x 890 (mm)
NET WEIGHT	98kg
GROSS WEIGHT	108kg
SHIPPING VOLUME	0.69m <sup>3</sup>
CHAMBER DIMENSIONS	595 x 495 x 495 (mm)
CHAMBER VOLUME	150ℓ
SHELF CAPACITY	5 with 50mm spaces
RPM	10-250
PLATFORM SIZE	480 x 380 (mm)



Model 353

**MODEL: 260**  
14L ORBITAL SHAKING INCUBATOR

**SPECIFICATIONS**

POWER	900W
VOLTAGE	230V / 50Hz
PACKAGING (W x D x H)	635 x 560 x 720 (mm)
UNIT (W x D x H)	460 x 530 x 555 (mm)
NET WEIGHT	27kg
GROSS WEIGHT	30kg
SHIPPING VOLUME	0.26m <sup>3</sup>
CHAMBER DIMENSIONS	455 x 455 x 345 (mm)
CHAMBER VOLUME	14 ℓ
RPM	10 - 250
PLATFORM SIZE	395 x 295 (mm)



Model 260

**ACCESSORIES**

**NOTE**

Double platform available on request

**Accessories for the following Models**

260, 353, 355

**ORDER CODES**

By Volume

Volume (ℓ)	150	14
DESCRIPTION	CODE	
Extra chrome plated wire shelf	358	
Inner glass door	359	
50ml Flask Clamp (Capacity 30)	269A	269A
125ml Flask Clamp (Capacity 30)	269B	269B
250ml Flask Clamp (Capacity 20)	269C	269C
500ml Flask Clamp (Capacity 10)	269D	269D
1000ml Flask Clamp (Capacity 4)	269E	269E
2000ml Flask Clamp (Capacity 2)	269F	269F



**LABORATORY CIRCULATOR**

The Scientific laboratory circulator is designed to complement the range of waterbaths and accessories requiring a high degree of temperature control accuracy.

**FEATURES**

- Powerful circulation pump to ensure uniform temperature distribution within the bath
- Suitable for pumping low viscosity media such as water
- Rear panel mounted safety fuse
- High quality, incoloy immersion heating element
- All body parts and pump manufactured from grade 304 stainless steel
- Separate main switch, control pilot light and heat switch
- External gravity pump port capable of pumping 6 litres p/min @ 1M head

- Ideal for applications where a high degree of accuracy is required
- Electronic P.I.D temperature control with digital indication of set and process value
- High accuracy PT 100 temperature sensor
- Solid state control relay for optimum reliability and rapid response
- Float switch safety prevents damage to the heating element
- Operating temperatures based on an ambient of 25°C
- Temperature range 37°C to 100°C

**MODEL: 103**

DIGITAL CIRCULATOR

**SPECIFICATIONS**

POWER	1200W
VOLTAGE	230V / 50Hz
PACKAGING (W x D x H)	425 x 415 x 180 (mm)
UNIT (W x D x H)	120 x 390 x 325 (mm)
NET WEIGHT	4.5kg
GROSS WEIGHT	5.5kg
SHIPPING VOLUME	0.03m <sup>3</sup>
MAX TEMPERATURE	100°C
PUMP CAPACITY @ 1m HEAD	6 ℓ/min



Model 103

**COOLING BATHS**

The Scientific cooling bath units offer a versatile solution where a low temperature medium is required. The insulated bath can be used for experimentation or the medium can be externally pumped to other equipment. The latter process is often used in digestion research or testing.

**FEATURES**

- Electronic P.I.D temperature control with digital indication of set and process value
- High accuracy PT 100 temperature sensor
- Powerful internal pump for circulation in the bath or externally. Capacity 6 l/min @ 1M head
- Temperature range ambient -20°C to +100°C
- Removable lid
- Reliable refrigeration system with high quality compressor and components
- Grade 304 stainless steel tank
- Solid state control relay for optimum reliability and rapid response

**NOTE**

- Model 175 fitted with castors
- Operating temperatures based on an ambient of 25°C

**MODEL: 170**

10L COOLING BATH

**SPECIFICATIONS**

POWER	1000W
VOLTAGE	230V / 50Hz
PACKAGING (W x D x H)	380 x 575 x 740 (mm)
UNIT (W x D x H)	300 x 445 x 675 (mm)
NET WEIGHT	27kg
GROSS WEIGHT	30kg
SHIPPING VOLUME	0.17m <sup>3</sup>
TANK DIMENSIONS	200 x 300 x 150 (mm)
OPENING DIMENSIONS	200 x 150 (mm)
TANK VOLUME	10ℓ

**MODEL: 175**

20L COOLING BATH

**SPECIFICATIONS**

POWER	1500W
VOLTAGE	230V / 50Hz
PACKAGING (W x D x H)	570 x 600 x 870 (mm)
UNIT (W x D x H)	420 x 520 x 850 (mm)
NET WEIGHT	37kg
GROSS WEIGHT	40kg
SHIPPING VOLUME	0.25m <sup>3</sup>
TANK DIMENSIONS	300 x 360 x 180 (mm)
OPENING DIMENSIONS	300 x 210 (mm)
TANK VOLUME	20ℓ



Model 170



Model 175

# LABORATORY WATER BATHS

These water baths and accessories are ideally suited to all general laboratory applications. All baths together with the optional accessories are designed to be used with the Model 103 circulators.

## FEATURES

- All bodies are constructed from corrosion protected mild steel with an epoxy powder coated finish
- Inner tanks are manufactured from grade 304 stainless steel for exceptional corrosion resistance
- Optional gabled lids and height reducers manufactured from grade 304 stainless steel
- All height reducers easily adjustable
- Specially designed gabled lid to ensure no direct dripping of condensate into samples
- Cool to touch lid handle

### MODEL: 130

14L WATER BATH

#### SPECIFICATIONS

PACKAGING (W x D x H)	415 x 335 x 330 (mm)
UNIT (W x D x H)	350 x 350 x 250 (mm)
NET WEIGHT	7.5kg
GROSS WEIGHT	8kg
SHIPPING VOLUME	0.05m <sup>3</sup>
TANK DIMENSIONS	225 x 305 x 200 (mm)
TANK VOLUME	14ℓ

### MODEL: 132

34L WATER BATH

#### SPECIFICATIONS

PACKAGING (W x D x H)	700 x 420 x 320 (mm)
UNIT (W x D x H)	685 x 350 x 245 (mm)
NET WEIGHT	14.5kg
GROSS WEIGHT	15.5kg
SHIPPING VOLUME	0.09m <sup>3</sup>
TANK DIMENSIONS	555 x 305 x 200 (mm)
TANK VOLUME	34ℓ

### MODEL: 132A

40L WATER BATH

#### SPECIFICATIONS

PACKAGING (W x D x H)	930 x 415 x 315 (mm)
UNIT (W x D x H)	835 x 350 x 245 (mm)
NET WEIGHT	15kg
GROSS WEIGHT	16kg
SHIPPING VOLUME	0.12m <sup>3</sup>
TANK DIMENSIONS	705 x 305 x 200 (mm)
TANK VOLUME	40ℓ



## ACCESSORIES

Accessories for the following Models  
130, 132, 132A

### ORDER CODES

By Volume

Volume (ℓ)	14	34	40
<b>DESCRIPTION</b>	<b>CODE</b>		
Height Reducer Adjustable 50 - 90mm	136C	136	136A
Stainless steel Gabled lid	139C	139	139A



Model 139C



Model 139



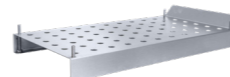
Model 139A



Model 136C



Model 136



Model 136A

# HEATABLE BATHS

This proven range of heatable baths are ideally suited for water or oil applications. The units are available in two model options depending on the control accuracy required.

## FEATURES

- Inner tanks are manufactured from grade 304 stainless steel for exceptional corrosion resistance
- Reliable, high quality incoloy heating elements
- Heaters and sensors protected by a perforated removable diffuser to ensure even temperature distribution
- Auxiliary heating element to assist in rapid heat up of bath if required
- High density mineral wool insulation for minimum heat loss
- Unit designed for operation at ambient +10°C to 199°C

### Specific features model 415

- Ideal for applications where a lower degree of accuracy is acceptable
- Hydraulic thermostat control

### Specific features model 416

- Ideal for applications where a higher degree of accuracy is required
- Electronic P.I.D temperature control with digital indication of set and process value
- High accuracy PT 100 temperature sensor
- Solid state control relay for optimum reliability and rapid response

### Specific features model 415/416

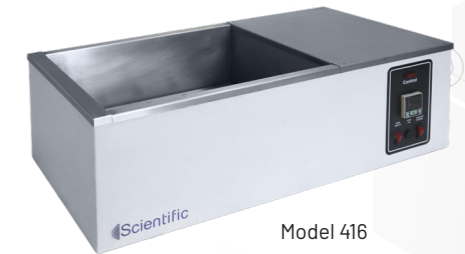
- Grade 304 stainless steel lid optional

### NOTE

- Operating temperatures based on an ambient of 25°C



Model 415



Model 416

### MODEL: 415

25L ECONOMY HEATABLE WATERBATH

#### SPECIFICATIONS

POWER	2000W
VOLTAGE	230V / 50Hz
PACKAGING (W x D x H)	925 x 425 x 330 (mm)
UNIT (W x D x H)	790 x 350 x 250 (mm)
NET WEIGHT	15kg
GROSS WEIGHT	16kg
SHIPPING VOLUME	0.13m <sup>3</sup>
TANK DIMENSIONS	460 x 305 x 200 (mm)
TANK VOLUME	25ℓ

### MODEL: 416

25L DIGITAL HEATABLE WATERBATH

#### SPECIFICATIONS

POWER	2000W
VOLTAGE	230V / 50Hz
PACKAGING (W x D x H)	925 x 425 x 330 (mm)
UNIT (W x D x H)	790 x 350 x 250 (mm)
NET WEIGHT	15kg
GROSS WEIGHT	16kg
SHIPPING VOLUME	0.13m <sup>3</sup>
TANK DIMENSIONS	460 x 305 x 200 (mm)
TANK VOLUME	25ℓ

## ACCESSORIES

Accessories for the following Models  
415, 416



133

### ORDER CODES

By Volume

Volume (ℓ)	25
<b>DESCRIPTION</b>	<b>CODE</b>
Stainless steel Gabled lid	133

# METABOLIC SHAKING WATER BATH

The metabolic shaking water bath is ideal for general material and corrosion testing, biochemical research, enzyme and tissue studies, fermentation, incubation and thawing of blood samples.

## FEATURES

- Electronic P.I.D temperature control with digital indication of set and process value
- High accuracy PT 100 temperature sensor
- Solid state control relay for optimum reliability and rapid response
- Micro processor based speed control for high stability with digital indication of RPM
- 120 minute timer with infinity override position for continuous operation
- Grade 304 stainless steel tank interior and lid
- Suitable for water or low viscosity medium
- Powerful internal circulation pump ensures uniform temperature distribution
- Temperature range ambient +7°C to 100°C
- Flask holding clamps available as accessories
- Easily removable shaking carriage for cleaning and maintenance
- Platform size 450 x 300 x 160 mm
- Shaking stroke 38 mm
- Supplied with gabled lid specially designed to ensure no direct dripping of condensate onto samples
- Fitted with drainage tap for easy cleaning and maintenance

## NOTE

- Operating temperatures based on an ambient of 25°C

## MODEL: 207

40L METABOLIC SHAKING WATER BATH

## SPECIFICATIONS

POWER	1600W
VOLTAGE	230V / 50Hz
PACKAGING (W x D x H)	950 x 520 x 420 (mm)
UNIT (W x D x H)	840 x 410 x 355 (mm)
NET WEIGHT	40kg
GROSS WEIGHT	43kg
SHIPPING VOLUME	0.21m <sup>3</sup>
TANK DIMENSIONS	640 x 350 x 170 (mm)
TANK VOLUME	40ℓ
SHAKING PLATFORM (W x D x H)	450 x 295 x 160 (mm)
RPM	10 - 250



Model 207

# ACCESSORIES

Accessories for the following Model  
207

## ORDER CODES

DESCRIPTION	CODE
50ml Flask Clamp (Capacity 40)	269A
125ml Flask Clamp (Capacity 15)	269B
250ml Flask Clamp (Capacity 10)	269C
500ml Flask Clamp (Capacity 6)	269D
1000ml Flask Clamp (Capacity 3)	269E

# ORBITAL SHAKERS

The Scientific orbital shakers create a shaking motion ideal for mixing liquids in flasks and conducive to culturing cells. A full range of accessories are available for all clamping requirements. The robust, functional design ensures reliable trouble free operation.

## FEATURES

- Micro processor based speed control for high stability with digital indication of RPM
- 120 minute timer with infinity override position for continuous operation
- Loose rubber mat fitted to platform
- Counterbalanced drive system ensures smooth running under all loads

## NOTE

- Available in 8kg or 30 kg load capacity
- Flask holding clamps available as accessories
- Standard unit supplied with platform and 4 adjustable clamping bars



Model 261



Model 262

## MODEL: 261

ORBITAL SHAKER

## SPECIFICATIONS

POWER	100W
VOLTAGE	230V / 50Hz
PACKAGING (W x D x H)	475 x 395 x 250 (mm)
UNIT (W x D x H)	440 x 370 x 290 (mm)
NET WEIGHT	14kg
GROSS WEIGHT	16kg
SHIPPING VOLUME	0.05m <sup>3</sup>
PLATFORM DIMENSIONS	400 x 300 (mm)
STROKE	25mm
RPM	10 - 250
LOAD CAPACITY	8kg

## MODEL: 262

ORBITAL SHAKER

## SPECIFICATIONS

POWER	100W
VOLTAGE	230V / 50Hz
PACKAGING (W x D x H)	680 x 600 x 280 (mm)
UNIT (W x D x H)	640 x 540 x 340 (mm)
NET WEIGHT	32kg
GROSS WEIGHT	34kg
SHIPPING VOLUME	0.11m <sup>3</sup>
PLATFORM DIMENSIONS	595 x 480 (mm)
STROKE	25mm
RPM	10 - 250
LOAD CAPACITY	30kg

# ACCESSORIES

Accessories for the following Models  
261, 262

## ORDER CODES

By Model

Model	261
DESCRIPTION	CODE
Shaker Bar	261A
Double Platform	267A
50ml Flask Clamp (Capacity 30)	269A
125ml Flask Clamp (Capacity 30)	269B
250ml Flask Clamp (Capacity 20)	269C
500ml Flask Clamp (Capacity 10)	269D
1000ml Flask Clamp (Capacity 4)	269E
2000ml Flask Clamp (Capacity 2)	269F

Model	262
DESCRIPTION	CODE
Shaker Bar	262A
Double Platform	267B
50ml Flask Clamp (Capacity 50)	269A
125ml Flask Clamp (Capacity 50)	269B
250ml Flask Clamp (Capacity 40)	269C
500ml Flask Clamp (Capacity 10)	269D
1000ml Flask Clamp (Capacity 10)	269E
2000ml Flask Clamp (Capacity 6)	269F

## SIEVE SHAKER

The Scientific laboratory sieve shaker and analytical test sieves are universally used for particle size analysis in QA laboratories, the method is simple, economical and interpretation of results is easy.

### FEATURES

- Manual 0 - 30 minute timer, cuts off power. Reset via on/off switch
- Catchment tray and lid included
- Compatible with Ø100 and Ø200 sieves
- RPM range from 0 to 1420

### MODEL: 266

SIEVE SHAKER

### SPECIFICATIONS

POWER	1250W
VOLTAGE	230V / 50Hz
PACKAGING (W x D x H)	450 x 530 x 500 (mm)
UNIT (W x D x H)	380 x 400 x 690 (mm)
NET WEIGHT	31 kg
GROSS WEIGHT	45 kg
SHIPPING VOLUME	0.12 m <sup>3</sup>
NOISE LEVEL	<50dB
STROKE	5mm
RPM	1420
STANDARD SIEVE LAYERS	8
OUTPUT SIZE	0.025-3 mm
DIAMETER OF SIEVE	Ø100 and Ø200 (mm)



Model 266

## LINEAR SHAKER

The Scientific linear shakers create a shaking motion ideal for mixing liquids in flasks and conducive to culturing cells. A full range of accessories are available for all clamping requirements. The robust, functional design ensures reliable trouble free operation.

### FEATURES

- Microprocessor based speed control with easy to use RPM setting and digital indication of speed
- Unit supplied complete with platform and 4 clamping bars with rubber mat insertion on platform
- Platform size 600mm x 480mm
- Stroke length 40mm
- Digital timer setting with the option of run-down or continuous operation

### NOTE

- Optional beverage platform available

### MODEL: 264

LINEAR SHAKER

### SPECIFICATIONS

POWER	230W
VOLTAGE	230V / 50Hz
PACKAGING (W x D x H)	675 x 600 x 265 (mm)
UNIT (W x D x H)	650 x 570 x 250 (mm)
NET WEIGHT	20kg
GROSS WEIGHT	23kg
SHIPPING VOLUME	0.11m <sup>3</sup>
PLATFORM DIMENSIONS	570 x 460 (mm)
STROKE	40mm
RPM	50 - 400
LOAD CAPACITY	20kg



Model 264

## GLASSWARE DRIER

This simple, robust unit is ideally suited for the rapid and efficient drying of laboratory glassware.

### FEATURES

- Grade 304 stainless steel body construction
- Reliable incoloy heating elements
- Unit provided with 2 chrome plated wire shelves
- Toughened glass sliding doors on both sides for ease of access
- Variable heat control via energy regulator

### MODEL: 310

GLASSWARE DRIER

### SPECIFICATIONS

POWER	1000W
VOLTAGE	230V / 50Hz
PACKAGING (W x D x H)	1120 x 620 x 585 (mm)
UNIT (W x D x H)	1040 x 555 x 530 (mm)
NET WEIGHT	27kg
GROSS WEIGHT	30kg
SHIPPING VOLUME	0.41m <sup>3</sup>
CHAMBER DIMENSIONS	965 x 495 x 415 (mm)
CHAMBER VOLUME	180ℓ



Model 310

## MAGNETIC STIRRER

Magnetic Stirrers are suitable for most types of laboratory applications where controlled stirring and heating is required.

### FEATURES

- For controlled heating and stirring
- Reliable heating elements
- Temperature range 50°C - 350°C
- Reliable solid state electronic speed control
- Stirring bar 40 x 8mm
- RPM: 100 - 1800

### MODEL: 105

MAGNETIC STIRRER

### SPECIFICATIONS

POWER	500W
VOLTAGE	230V / 50Hz
PACKAGING (W x D x H)	230 x 310 x 215 (mm)
UNIT (W x D x H)	180 x 270 x 330 (mm)
NET WEIGHT	4.6kg
GROSS WEIGHT	5kg
SHIPPING VOLUME	0.02m <sup>3</sup>
LOAD CAPACITY	5ℓ
RPM	100 - 1800
PLATE SIZE	170 x 170 (mm)



Model 105

## LABORATORY TROLLEYS

This proven range of laboratory and general purpose trolleys are characterized by their robust construction and hygienic, easy to clean design. Large castor wheels, with vibration absorbing tyres, ensure ease of manoeuvrability and no snagging on floor joints or lift entrances. The top trays are at a convenient working height to allow for easy transfer of items to and from any standard bench.

### FEATURES

- Supplied in knock down form
- Units are easy to assemble, instructions provided
- 100mm easy glide, silent running, heavy duty castors
- Non marking tyres to ensure floors remain clean
- Carrying capacity 50 kg per shelf
- Stainless steel trays
- Sturdy stainless steel framework

### SPECIFICATIONS

MODEL	552	554
PACKAGING (W x D x H)	1000 x 205 x 600 (mm)	1000 x 205 x 600 (mm)
UNIT (W x D x H)	930 x 550 x 930 (mm)	930 x 550 x 930 (mm)
NET WEIGHT	20kg	25kg
GROSS WEIGHT	21kg	26kg
SHIPPING VOLUME	0.12m <sup>3</sup>	0.12m <sup>3</sup>
NUMBER OF TRAYS	2	3
DISTANCE BETWEEN TRAYS	450mm	200mm



Model 552



Model 554

## ACCESSORIES

Accessories for the following Models  
552, 554

### ORDER CODES

DESCRIPTION	CODE
Extra stainless steel tray	561
Spare Wheel	562

## SPECIAL LABORATORY TROLLEY

### MODEL: 551

SPECIAL LABORATORY TROLLEY

### SPECIFICATIONS

PACKAGING (W x D x H)(TROLLEY)	1000 x 205 x 600 (mm)
PACKAGING (W x D x H)(BASKETS)	460 x 620 x 320 (mm)(x2)
UNIT (W x D x H)	930 x 545 x 930 (mm)
NET WEIGHT	20kg
GROSS WEIGHT	23kg
SHIPPING VOLUME	0.12m <sup>3</sup>
NUMBER OF TRAYS	1
NUMBER OF BASKETS	2
DISTANCE BETWEEN BASKETS & TRAY	200mm



Model 551

## DESICCATOR CABINET

Scientific laboratory desiccators are sealable enclosures containing desiccants used for preserving moisture-sensitive items.

### FEATURES

- For indoor use only
- Stainless steel 304 interior
- Epoxy powder coated exterior
- Magnetic door closure with toughened glass window

### NOTE

- Supplied with two perforated trays and one tray for desiccant
- Desiccant not supplied

### MODEL: 710

40L DESICCATOR CABINET

### SPECIFICATIONS

PACKAGING (W x D x H)	590 x 575 x 550 (mm)
UNIT (W x D x H)	480 x 480 x 465 (mm)
NET WEIGHT	8kg
GROSS WEIGHT	9kg
SHIPPING VOLUME	0.19m <sup>3</sup>
CHAMBER DIMENSIONS	350 x 330 x 350 (mm)
CHAMBER VOLUME	40ℓ



Model 710

### MODEL: 711

80L DESICCATOR CABINET

### SPECIFICATIONS

PACKAGING (W x D x H)	645 x 670 x 680 (mm)
UNIT (W x D x H)	560 x 550 x 590 (mm)
NET WEIGHT	14kg
GROSS WEIGHT	15kg
SHIPPING VOLUME	0.29m <sup>3</sup>
CHAMBER DIMENSIONS	430 x 380 x 465 (mm)
CHAMBER VOLUME	80ℓ



Model 711



# HOTPLATES

This proven range of reliable Scientific laboratory hotplates are ideally suited for applications where high temperature stability is not critical.

## FEATURES

- Heavy duty mild steel heating top with special Teflon finish
- Mild steel body treated for long term resistance to corrosion with an epoxy powder coated finish
- Unique body design to ensure maximum cooling airflow to the controls and wiring
- Suitable for continuous operation
- Variable energy regulator for optimum heat control
- Pilot light for power indication

### NOTE

- Sandbath attachments available
- 3 models to choose from
- Maximum operating temperature: 250°C



Model 500



Model 501



Model 502

### MODEL: 500

HOTPLATE

#### SPECIFICATIONS

POWER	1500W
VOLTAGE	230V / 50Hz
PACKAGING (W x D x H)	370 x 345 x 230 (mm)
UNIT (W x D x H)	305 x 330 x 165 (mm)
NET WEIGHT	16kg
GROSS WEIGHT	17kg
SHIPPING VOLUME	0.03m <sup>3</sup>
SURFACE DIMENSIONS	300 x 300 (mm)
MAX TEMPERATURE	250°C

### MODEL: 502

HOTPLATE

#### SPECIFICATIONS

POWER	3000W
VOLTAGE	230V / 50Hz
PACKAGING (W x D x H)	700 x 555 x 240 (mm)
UNIT (W x D x H)	605 x 485 x 165 (mm)
NET WEIGHT	31kg
GROSS WEIGHT	32kg
SHIPPING VOLUME	0.09m <sup>3</sup>
SURFACE DIMENSIONS	600 x 450 (mm)
MAX TEMPERATURE	250°C

### MODEL: 501

HOTPLATES

#### SPECIFICATIONS

POWER	2000W
VOLTAGE	230V / 50Hz
PACKAGING (W x D x H)	550 x 400 x 255 (mm)
UNIT (W x D x H)	455 x 340 x 165 (mm)
NET WEIGHT	22kg
GROSS WEIGHT	23kg
SHIPPING VOLUME	0.06m <sup>3</sup>
SURFACE DIMENSIONS	450 x 300 (mm)
MAX TEMPERATURE	250°C

# ACCESSORIES

Accessories for the following Models  
500, 501, 502

## ORDER CODES

By Model

Model	500	501	502
<b>DESCRIPTION</b>	<b>CODE</b>		
Sandbath Attachment	509	510	513
Remote control	500E	501E	502E



Model 509



Model 500E

# STEAM BATHS

The Scientific range of laboratory steambaths or hot water baths are suited for many types of digestion experiments.

## FEATURES

- Easily replaceable high quality incoloy heating element for long and reliable use
- Manual reset safety thermostat protects the element should the bath run dry
- Simple device for automatic control of water level
- Flask openings 31mm, 50mm, 70mm and 80mm diameter
- Heat resistant, safe to touch lid knobs
- The self locating removable lids can readily accommodate a variety of round bottom kjeldahl flasks.
- All models are manufactured from high grade 304 stainless steel.
- The unique design of the lid and tank rim ensure that all water vapor returns back to the bath.



Model 401



Model 402

### MODEL: 401

STEAM BATH - 6 STATION

#### SPECIFICATIONS

POWER	2000W
VOLTAGE	230V / 50Hz
PACKAGING (W x D x H)	550 x 400 x 245 (mm)
UNIT (W x D x H)	545 x 280 x 160 (mm)
NET WEIGHT	5kg
GROSS WEIGHT	6kg
SHIPPING VOLUME	0.05m <sup>3</sup>
NUMBER OF STATIONS	6

### MODEL: 402

STEAM BATH - 12 STATION

#### SPECIFICATIONS

POWER	2000W
VOLTAGE	230V / 50Hz
PACKAGING (W x D x H)	710 x 545 x 230 (mm)
UNIT (W x D x H)	660 x 405 x 160 (mm)
NET WEIGHT	7kg
GROSS WEIGHT	8kg
SHIPPING VOLUME	0.09m <sup>3</sup>
NUMBER OF STATIONS	12

# BLENDER

Scientific blenders are durable and robust for use in agricultural, microbiological and cement laboratories

## FEATURES

- Multi-function
- Two-in-one stainless steel cutting blade
- Industrial high speed motor
- Premium quality 1.5L polycarbonate jug with mixing rod
- Precision technology

### MODEL: 722

1.5L BLENDER

#### SPECIFICATIONS

POWER	1200W
VOLTAGE	230V / 50Hz
PACKAGING (W x D x H)	410 x 215 x 240 (mm)
UNIT (W x D x H)	200 x 225 x 420 (mm)
NET WEIGHT	4.5kg
GROSS WEIGHT	5.5kg
SHIPPING VOLUME	0.04m <sup>3</sup>
JUG CAPACITY	1.5ℓ



Model 722

# MIXER

Scientific mixers are durable and robust for use in agricultural, microbiological and cement laboratories

## FEATURES

- Rugged construction
- Supplied with stainless steel mixing cup (800ml)
- Small footprint

## MODEL: 723

800ml MIXER

## SPECIFICATIONS

POWER	230V / 50Hz
VOLTAGE	350W
PACKAGING (W x D x H)	190 x 180 x 570 (mm)
UNIT (W x D x H)	180 x 260 x 470 (mm)
NET WEIGHT	4.5kg
GROSS WEIGHT	5.5kg
SHIPPING VOLUME	0.02m <sup>3</sup>
CUP CAPACITY	800ml



Model 723

# WATER STILLS

Water distillers are used to produce high quality water through the process of distillation. This is an effective method of producing high quality water from a raw source and eliminating contaminants, minerals and trace elements.

## FEATURES

- For indoor use only
- Ambient temperature range +5°C to +40°C
- Relative humidity conditions: 80%RH for temperatures up to 31°C decreasing linearly to 50% RH at 40°C
- Safety cut out in the event of low water
- Easy access for cleaning and de-scaling
- 3 models to choose from

## NOTE

- Water yield: **405:** 5ℓ/h  
**406:** 10ℓ/h  
**407:** 20ℓ/h

## MODEL: 405

5L WATER STILLS

## SPECIFICATIONS

POWER	4500W
VOLTAGE	230V / 50Hz
PACKAGING (W x D x H)	370 x 360 x 830 (mm)
UNIT (W x D x H)	330 x 240 x 730 (mm)
NET WEIGHT	10kg
GROSS WEIGHT	11kg
SHIPPING VOLUME	0.11m <sup>3</sup>
CAPACITY	5ℓ
WATER YIELD	5ℓ/h

## MODEL: 406

10L WATER STILLS

## SPECIFICATIONS

POWER	7500W
VOLTAGE	230V / 380V / 50Hz
PACKAGING (W x D x H)	385 x 385 x 925 (mm)
UNIT (W x D x H)	350 x 270 x 830 (mm)
NET WEIGHT	11kg
GROSS WEIGHT	12kg
SHIPPING VOLUME	0.14m <sup>3</sup>
CAPACITY	10ℓ
WATER YIELD	10ℓ/h

## MODEL: 407

20L WATER STILLS

## SPECIFICATIONS

POWER	15000W
VOLTAGE	380V / 50Hz
PACKAGING (W x D x H)	410 x 410 x 1090 (mm)
UNIT (W x D x H)	380 x 380 x 1010 (mm)
NET WEIGHT	14kg
GROSS WEIGHT	15kg
SHIPPING VOLUME	0.18m <sup>3</sup>
CAPACITY	20ℓ
WATER YIELD	20ℓ/h



Model 405

# RIFFLE SPLITTERS

## FEATURES

- Battery of fourteen and twenty open chambers
- Sample is equally divided into two subsamples
- The chamber width is available in various sizes depending on size of opening
- Powder coated steel construction
- 7 variants to choose from
- Supplied with three bins



## SPECIFICATIONS

MODEL	600	601	602	603
PACKAGING (W x D x H)	425 x 450 x 500 (mm)	545 x 450 x 500 (mm)	670 x 450 x 500 (mm)	925 x 450 x 500 (mm)
UNIT (W x D x H)	425 x 450 x 450 (mm)	545 x 450 x 450 (mm)	670 x 450 x 450 (mm)	925 x 450 x 450 (mm)
NET WEIGHT	8kg	9kg	10kg	14kg
GROSS WEIGHT	9kg	10kg	11kg	14kg
SHIPPING VOLUME	0.10m <sup>3</sup>	0.12m <sup>3</sup>	0.15m <sup>3</sup>	0.21m <sup>3</sup>
CHAMBER SIZE	12.5 (mm)	19.0 (mm)	25.0 (mm)	37.5 (mm)
NUMBER OF SLOTS	20	20	20	20

## SPECIFICATIONS

MODEL	604	605	606	607
PACKAGING (W x D x H)	680 x 450 x 500 (mm)	1210 x 450 x 500 (mm)	860 x 450 x 500 (mm)	445x 345x460 (mm)
UNIT (W x D x H)	680 x 450 x 450 (mm)	1210 x 450 x 450 (mm)	860 x 450 x 450 (mm)	445x 345x455 (mm)
NET WEIGHT	10kg	16kg	12kg	14kg
GROSS WEIGHT	10kg	16kg	12kg	14kg
SHIPPING VOLUME	0.15m <sup>3</sup>	0.27m <sup>3</sup>	0.19m <sup>3</sup>	0.7m <sup>3</sup>
CHAMBER SIZE	37.5 (mm)	75.0 (mm)	50.0 (mm)	10.0 (mm)
NUMBER OF SLOTS	14	14	14	20

## SPECIFICATIONS

MODEL	608	609	610
PACKAGING (W x D x H)	480x 345x460 (mm)	580x 345x460 (mm)	735x 345x460 (mm)
UNIT (W x D x H)	480x 345x455 (mm)	580x 345x455 (mm)	735x 345x455 (mm)
NET WEIGHT	16kg	18kg	22kg
GROSS WEIGHT	16kg	18kg	22kg
SHIPPING VOLUME	0.07m <sup>3</sup>	0.09m <sup>3</sup>	0.12m <sup>3</sup>
CHAMBER SIZE	14.0 (mm)	20.0 (mm)	28.0 (mm)
NUMBER OF SLOTS	20	20	20

# SCIENTECH



## OVERHEAD STIRRER

Overhead Stirrers are suitable for most types of laboratory applications where controlled stirring is required.

### FEATURES

- Easy to set digital control with rotating knob
- Plate size 200mm x 300mm
- Solid state electronic speed control
- Removable stirrer bar for easy cleaning
- RPM 100 - 2500
- Adjustable height and angle via clamping bar
- Maximum volume 20 litres

### Note

- Glass flask not included
- Stand and clamping bar included

### MODEL: 720

OVERHEAD STIRRER

### SPECIFICATIONS

POWER	60W
VOLTAGE	230V / 50Hz
PACKAGING (W x D x H)	270 x 400 x 200 (mm)
UNIT (W x D x H)	200 x 380 x 860 (mm)
NET WEIGHT	8kg
GROSS WEIGHT	8.5kg
SHIPPING VOLUME	0.02m <sup>3</sup>
PLATE SIZE	200 x 300 (mm)
RPM	100 - 2500



Model 720

## CERAMIC MAGNETIC STIRRER

Magnetic Stirrers are suitable for most types of laboratory applications where controlled stirring and heating is required.

### FEATURES

- Corrosion resistant ceramic heating plate
- Reliable heating elements
- Temperature range 50°C - 350°C
- Reliable solid state electronic speed control
- Stirring bar 40 x 8mm
- RPM: 100 - 2000
- Control of temperature via hotplate control or by external PT 100 inserted into the beaker

### MODEL: 725

CERAMIC MAGNETIC STIRRER

### SPECIFICATIONS

POWER	600W
VOLTAGE	230V / 50Hz
PACKAGING (W x D x H)	240 x 400 x 220 (mm)
UNIT (W x D x H)	190 x 350 x 400 (mm)
NET WEIGHT	8kg
GROSS WEIGHT	8.5kg
SHIPPING VOLUME	0.02m <sup>3</sup>
PLATE SIZE	190 x 190 (mm)
RPM	100 - 2000
LOAD CAPACITY	5kg



Model 725

## INDEX

OVERHEAD STIRRER	38
CERAMIC MAGNETIC STIRRER	38
ULTRASONIC BATHS	39
DIGITAL CIRCULATOR	40
LABORATORY HOTPLATES	41

## Ts & Cs

**NOTE:** Pictures may vary from actual product. | **DISCLAIMER:** Output performance figures quoted are dependent on various factors. Scientific reserves the right, without notice, to make changes and revisions to product specifications, materials and design, when we believe it will provide better performance, durability, and efficiency. Unit measurements may vary depending on point of reference. | **WARRANTY:** All Scientech equipment comes with a standard ONE year warranty. REMEMBER TO COMPLETE THE ONLINE WARRANTY REGISTRATION

# HEATED MAGNETIC STIRRER

Heated Magnetic Stirrers are suitable for most types of laboratory applications where controlled stirring and heating is required.

## FEATURES

- Corrosion resistant ceramic heating plate
- Reliable heating elements
- Temperature range 50°C - 350°C
- Reliable solid state electronic speed control
- Stirring bar 40 x 8mm
- RPM: 100 - 1500
- Control of temperature via hotplate control or by external PT 100 inserted into the beaker

## MODEL: 727 HEATED MAGNETIC STIRRER

### SPECIFICATIONS

POWER	550W
VOLTAGE	230V / 50Hz
PACKAGING (W x D x H)	240 x 400 x 220 (mm)
UNIT (W x D x H)	190 x 350 x 400 (mm)
NET WEIGHT	8kg
GROSS WEIGHT	8.5kg
SHIPPING VOLUME	0.02m <sup>3</sup>
PLATE SIZE	Ø135 (mm)
RPM	100 - 1500
LOAD CAPACITY	20kg
TEMP. RANGE >5°C 0Rt to (°C)	350



# ACCESSORIES

## Accessories for the Model 727

## ORDER CODES

By Model

MODEL	727
-------	-----

## DESCRIPTION

- Carrying plate blue
- Fixed ring, blue
- Quarter pie, black
- Quarter pie, blue
- Quarter pie, gold
- Quarter pie, green
- Quarter pie, purple
- Quarter pie, red
- Reaction block for 50ml
- Reaction block for 100ml
- Reaction block for 250ml
- Reaction block for 500ml
- External PT-1000 temp. probe
- Support clamp for PT-1000
- Stirrer bar 40 x 8mm



# ULTRASONIC BATHS

Wide scope of uses in many fields for effective cleaning for example, precision instruments, jewellery and dentistry items. Can be used for emulsification, mixing and removal of oxidation from surfaces

## FEATURES

- Long lasting stainless steel 304 tanks
- Supplied with baskets and lids as standard
- Units above 4 Litre capacity are fitted with drain taps for easy maintenance
- All models fitted with a 60 minute timer and with bypass function
- All models are fitted with a heating element with a maximum temperature capacity of 80°C
- Variable frequency and power settings on all models

## Note

- Not for use with heat sensitive materials, ie. perfumes etc. due to heat transfer from transducers
- Operating temperatures based on an ambient of 25°C
- Units can only operate for 8 hours continuously



## SPECIFICATIONS

MODEL	701	702	703
POWER	50W	100W	150W
VOLTAGE	230V / 50Hz	230V / 50Hz	230V / 50Hz
PACKAGING (W x D x H)	230 x 200 x 305 (mm)	320 x 195 x 335 (mm)	440 x 310 x 435 (mm)
UNIT (W x D x H)	200 x 155 x 250 (mm)	305 x 165 x 295 (mm)	370 x 175 x 300 (mm)
NET WEIGHT	2.8kg	4.2kg	5.8kg
GROSS WEIGHT	3kg	4.5kg	6kg
SHIPPING VOLUME	0.01m <sup>3</sup>	0.02m <sup>3</sup>	0.06m <sup>3</sup>
TANK VOLUME	2.5ℓ	4ℓ	5.7ℓ
TANK DIMENSIONS	150 x 135 x 150 (mm)	235 x 135 x 150 (mm)	300 x 150 x 145 (mm)
TEMPERATURE RANGE	Ambient +7°C to 80°C	Ambient +7°C to 80°C	Ambient +7°C to 80°C

## SPECIFICATIONS

MODEL	704	705
POWER	300W	600W
VOLTAGE	230V / 50Hz	230V / 50Hz
PACKAGING (W x D x H)	480 x 440 x 470 (mm)	640 x 445 x 530 (mm)
UNIT (W x D x H)	415 x 325 x 355 (mm)	590 x 320 x 425 (mm)
NET WEIGHT	8.8kg	12.5kg
GROSS WEIGHT	9kg	13kg
SHIPPING VOLUME	0.10m <sup>3</sup>	0.15m <sup>3</sup>
TANK VOLUME	12ℓ	25ℓ
TANK DIMENSIONS	325 x 295 x 145 (mm)	500 x 300 x 200 (mm)
TEMPERATURE RANGE	Ambient +7°C to 80°C	Ambient +7°C to 80°C

## DIGITAL CIRCULATOR

The Scientech laboratory circulator and bath is designed to complement the range of waterbaths and accessories requiring a high degree of temperature control accuracy.

### FEATURES

- Submersible parts made from Stainless Steel for durability and ease of cleaning
- Powerful circulation pump with removable filter to ensure uniform temperature distribution
- Electronic temperature control with large easy to read digital display showing time, set temperature and current temperature
- Versatile clamp for attaching directly to baths
- Stainless steel immersion heating elements
- Float switch safety cut out
- High accuracy electronic controller
- Over temperature safety with reset button
- Operating temperature 37°C to 99°C

### Note

- Polycarbonate bath included
- Bath volume 25ℓ
- Operating temperatures based on an ambient of 25°C

### MODEL: 104

DIGITAL CIRCULATOR

### SPECIFICATIONS

POWER	1500W
VOLTAGE	230V / 50Hz
PACKAGING (W x D x H)	345 x 555 x 245 (mm)
UNIT (W x D x H)	325 x 590 x 325 (mm)
NET WEIGHT	2kg
GROSS WEIGHT	2.4kg
SHIPPING VOLUME	0.05m <sup>3</sup>
MAX TEMPERATURE	99°C
BATH DIMENSIONS	525 x 325 x 195 (mm)
TEMP. VARIATION AT A POINT	0.3°C



Model 104



## LABORATORY HOTPLATES

Scientech laboratory hotplates are ideally suited for applications where even temperature distribution is required.

### FEATURES

- Heavy duty aluminium top
- Excellent heat distribution
- Digital heat control for accurate temperature setting
- Maximum temperature setting of 400°C

### MODEL: 730

300mm LABORATORY HOTPLATE

### SPECIFICATIONS

POWER	1200W
VOLTAGE	230V / 50Hz
PACKAGING (W x D x H)	530 x 375 x 245 (mm)
UNIT (W x D x H)	300 x 430 x 150 (mm)
NET WEIGHT	16kg
GROSS WEIGHT	17kg
SHIPPING VOLUME	0.05m <sup>3</sup>
MAX TEMPERATURE	400°C
PLATE SIZE	300 x 300 (mm)



Model 730

### MODEL: 731

450mm LABORATORY HOTPLATE

### SPECIFICATIONS

POWER	1800W
VOLTAGE	230V / 50Hz
PACKAGING (W x D x H)	575 x 525 x 245 (mm)
UNIT (W x D x H)	450 x 490 x 150 (mm)
NET WEIGHT	22kg
GROSS WEIGHT	23kg
SHIPPING VOLUME	0.07m <sup>3</sup>
MAX TEMPERATURE	400°C
PLATE SIZE	450 x 300 (mm)



Model 731

### MODEL: 732

600mm LABORATORY HOTPLATE

### SPECIFICATIONS

POWER	3000W
VOLTAGE	230V / 50Hz
PACKAGING (W x D x H)	675 x 620 x 245 (mm)
UNIT (W x D x H)	600 x 550 x 150 (mm)
NET WEIGHT	31kg
GROSS WEIGHT	34kg
SHIPPING VOLUME	0.1m <sup>3</sup>
MAX TEMPERATURE	400°C
PLATE SIZE	600 x 450 (mm)



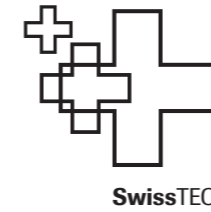
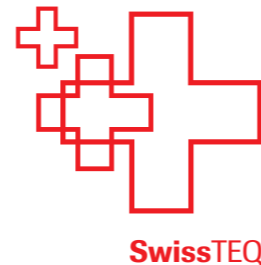
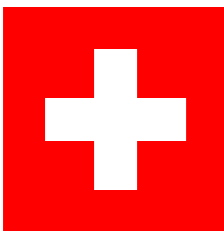
Model 732



SalvisLab Renggli AG, founded in 1927, is an established Swiss family enterprise with an international orientation in complete laboratory solutions.

As one of the leading European manufacturers and market leaders in Switzerland, Renggli designs and implements state-of-the-art laboratories for research, industry, medicine and education.

With the renowned SalvisLab trademark, Renggli develops and produces various drying and vacuum ovens, incubators, and laboratory cleaning machines.



# THERMOCENTER

The SalvisLab Thermocenter sets standards in quality and design. Short heating and precise temperature control make the Thermocenters true experts in heating and drying tasks. The peculiarity of this multi-functional dry and heat cabinet is in a unique system «everything-in-the-door». Above all, the system guarantees full flexibility in the placement of the interior. Thanks to the touch screen, the operation is even easier and more manageable than before. SwissTEQ in its unique form.

### FEATURES

- Product temperature controller
- Program- and user package
- Process graph
- Concealed PT-100 probe
- Factory temperature mapping
- LAN-Interface
- Additional memory
- Entry port 20mm
- Entry port 40mm
- IQ/OQ draft paper, 3 hard copiest
- + point calibration

### ACCESSORIES

- Stainless steel shelves (standard)
- Perforated stainless steel shelves
- Wire shelves
- Exhaust air adapter
- Fresh air filter
- Product temperature probe
- Stacking adapter
- Wall bracket



### MODEL: TC40 SPECIFICATIONS

POWER	1100W
VOLTAGE	230V / 50Hz
INTERNAL (W x D x H)	340 x 370 x 330 (mm)
UNIT (W x D x H)	460 x 490 x 526 (mm)
INTERNAL VOLUME (l)	40
SHELVES (standard/max)	1/8
TEMP VARIATION AT 50/150°C	0.4 / 1.5
TEMP VARIATION AT 100°C	0.1°C
MAX TEMPERATURE	200°C
HEAT UP TIME 70/150°C (MIN)	10/24
SALVIS TEQ CONTROLLER	YES
DISPLAY	TOUCH
PORTS	USB, RJ45

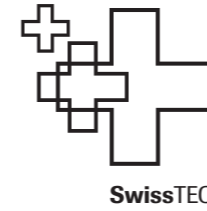
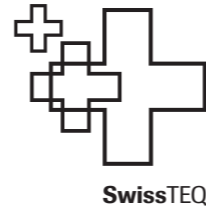


### MODEL: TC100 SPECIFICATIONS

POWER	1100W
VOLTAGE	230V / 50Hz
INTERNAL (W x D x H)	450 x 500 x 460 (mm)
UNIT (W x D x H)	570 x 620 x 656 (mm)
INTERNAL VOLUME (l)	100
SHELVES (standard/max)	1/8
TEMP VARIATION AT 50/150°C	0.4 / 1.7
TEMP VARIATION AT 100°C	0.1°C
MAX TEMPERATURE	200°C
HEAT UP TIME 70/150°C (MIN)	15/35
SALVIS TEQ CONTROLLER	YES
DISPLAY	TOUCH
PORTS	USB, RJ45



GLASSWARE CLEANER



GLASSWARE CLEANER

SCD G6 | SCD 2560 | SC 2560 165lt

SCD G9 | SCD 2590 165lt



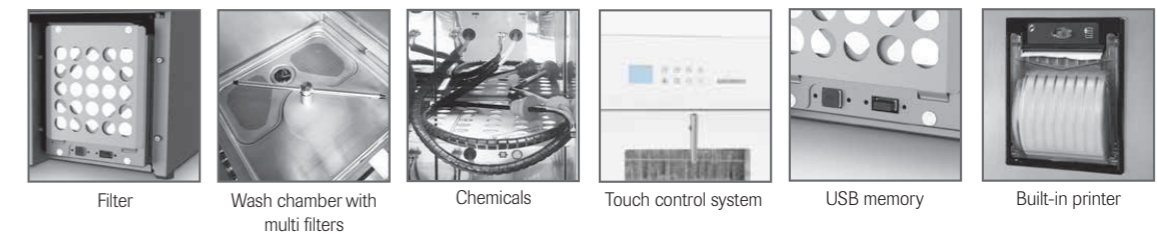
**UNDER BENCH MODELS.** Machines equipped with a manual opening and closing door made in double tempered glass (SCD G6) or stainless steel (SCD 2560 and SC2560), for laboratory glassware with 2 independent levels. SCD G6 and SCD 2560 are equipped with a system that filter, electrically heat and force, with a powerfull blower, the air in the wash chamber and inside the hollow instruments, to obtain an excellent drying result. A wide range of racks, nozzles and accessories complete these machines, suitable to wash and dry a wide variety of laboratory glassware.

**UNDER BENCH MODELS.** Machines equipped with a manual opening and closing door made in double tempered glass (SCD G9) or stainless steel (SCD 2590), for laboratory glassware with 2 independent levels. Both cleaners are equipped with a system that filter, electrically heat and force, with a powerfull blower, the air in the wash chamber and inside the hollow instruments, to obtain an excellent drying result. A wide range of racks, nozzles and accessories complete these machines, suitable to wash and dry a wide variety of laboratory glassware.

Key features



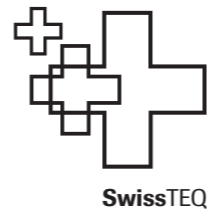
Key Features



Technical features	SCD G6	SCD 2560	SC 2560
External dimension (WxDxH)	600x650x845 mm		
Chamber dimension (WxDxH)	550x500x600 mm		
Max. pump flow rate	370 l/mn		
Max. drying fan flow rate with filter	180 m <sup>3</sup> /h	-	
Max. absorbed power	6.2 kW		
Standard/max. number of dosing pumps for chemicals with flowmeters	2/4		
Chemical tank capacity	5 l		

Technical features	SCD G9	SCD 2590
External dimension (WxDxH)	900x650x845 mm	
Chamber dimension (WxDxH)	550x500x600 mm	
Max. pump flow rate	370 l/mn	
Max. drying fan flow rate with filter	180 m <sup>3</sup> /h	
Max. absorbed power	6.2 kW	
Standard/max. number of dosing pumps for chemicals with flowmeters	2/4	
Chemical tank capacity	5 l	

# VACUCENTER



SwissTEQ

The SalvisLab Vacucenter is the optimal solution for oxidation-sensitive substances and thermally unstable products. It provides precise thermal conditions in dust-free vacuum atmosphere. These characteristics enable highly successful SalvisLab Vacucenter applications for a wide range of laboratory applications in areas such as chemical engineering, pharmaceuticals, foodstuffs, cosmetics and electronics. The SalvisLab Vacucenter is renowned for its compact formfactor, reliability and durability. SwissTEQ in its complete form.

## FEATURES

- Dynamic regulation and improved energy efficiency thanks to our SalvisTEQ controller
- Precise needle valve ensures a perfectly controlled pressurizing
- Real-time clock with process times
- Uniform temperature through mantle heating
- Safety class 3.3
- USB and RJ45 interface
- Touch screen
- Standard DN25 entry port
- Ambient temperature probe

## ACCESSORIES

- Stainless steel shelves
- Aluminum shelves
- Double connector air & inert gas
- Light barrier
- Product temperature probe PT-100
- Vacuum pump connector DN16

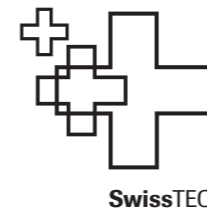
## MODEL: VC20 SPECIFICATIONS

POWER	900W
VOLTAGE	230V / 50Hz
INTERNAL (W x D x H)	250 x 250 x 320 (mm)
UNIT (W x D x H)	545 x 375 x 425 (mm)
INTERNAL VOLUME (l)	20
SHELVES (standard/max)	1/3
TEMP VARIATION AT 50/150°C	1.0/2.4°C
TEMP FLUCTUATION AT 100°C	0.2°C
TEMP RANGE >5°C oRt to	200°C
SALVIS TEQ CONTROLLER	YES
DISPLAY	TOUCH
PORTS	USB, RJ45



## MODEL: VC50 SPECIFICATIONS

POWER	1350W
VOLTAGE	230V / 50Hz
INTERNAL (W x D x H)	350 x 350 x 420 (mm)
UNIT (W x D x H)	645 x 475 x 525 (mm)
INTERNAL VOLUME (l)	50
SHELVES (standard/max)	1/5
TEMP VARIATION AT 50/150°C	1.0/2.6°C
TEMP FLUCTUATION AT 100°C	0.2°C
TEMP RANGE >5°C oRt to	200°C
SALVIS TEQ CONTROLLER	YES
DISPLAY	TOUCH
PORTS	USB, RJ45



SwissTEQ

# HEATING CENTER

The HC120 heating cabinet was specially developed and manufactured for the care and surgical sector, traumatology, intensive care units, baby units, maternity wards, old age and care homes, therapy units, physiotherapy, wellness areas, etc.

The unit is made of 304 stainless steel, while the interior is entirely manufactured from electropolished stainless steel and has all-around insulation, heating, and sealing. The temperature can be continuously and precisely adjusted, from ambient temperature +5°C to +80°C, with the digital display. The door locking mechanism is equipped with two magnetic fasteners to ensure the closure of the doors. Excellent materials and good insulation guarantee low operating costs. The HC120 heating cabinet is designed for continuous operation.

## MODEL: HC120 SPECIFICATIONS

POWER	900W
VOLTAGE	230V / 50Hz
INTERNAL (W x D x H)	480 x 435 x 610 (mm)
UNIT (W x D x H)	550 x 500 x 760 (mm)
INTERNAL VOLUME (l)	120
SHELVES	2
TEMP RANGE 10°C oRt to (°C)	80°C
IDLE POWER CONSUMPTION	65W @ 50°C



